



Welcome to Mitaka Open House Day 2019 !

This annual open house showcases 4 institutes: the National Astronomical Observatory of Japan; the Astrobiology Center; the Institute of Astronomy, University of Tokyo; and the Department of Astronomical Science, School of Physical Sciences, the Graduate University for Advanced Studies (SOKENDAI).

There are many fun events, such as, public viewing of the research facilities, exhibitions, lectures, and so on. Stargazing parties will be held at the Sports Field, and exhibitors will offer goods for sale. In addition, the Mitaka Picture Book House in the Astronomical Observatory Forest will offer exhibitions. Let's enjoy the Mitaka Open House at the Mitaka Campus surrounded by nature.

Oct. 26, 2019

Detailed
Event Information

This is available at the information corner in the rotary.

S3 Resting Room (10 a.m. - 5 p.m.)

C2 Resting Space (10 a.m. - 7 p.m.)

Where can I relax?

Also please feel free to use the outdoor benches.

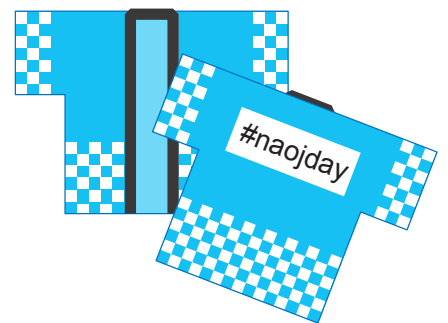
Injury and Illness

C2 Healthcare Room (There is a nurse.)

Instagram @naoj_mtk
https://instagram.com/naoj_mtk/

Twitter @naoj_mtk
https://twitter.com/naoj_mtk

This event staff
wear light blue coats.



To participate in Mitaka Open House Day 2019, please post photos to SNS.
(Please use the hashtag #naojday)

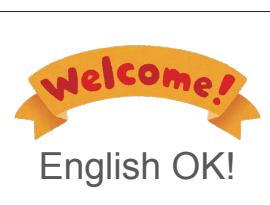
When you post to SNS, please show it to one of the event staff who have
the hashtag written on their backs. They will present you with a souvenir!

STAFF

Languages Spoken

Staff members who can speak languages
other than English wear stickers.

All staff members will make an effort to
speak English.



Events that can be enjoyed entirely in
English display this sign.

Mitaka Open House Day 2019 Web site

<https://www.nao.ac.jp/en/open-day/2019/>

Stargazing Parties **Weather Permitting.**



Solar observations (Using a Solar projection board)

10 a.m. - 3 p.m. 20-cm Telescope Dome



Solar observations (Using a coelostat and prism)

10 a.m. - 4 p.m. Solar Tower Telescope



Stargazing (Using the 50-cm Telescope)

N2 50-cm Telescope for Public Outreach

3 p.m. - 4:30 p.m. Anyone can Stargaze.

(4:30 p.m. - 5 p.m. Stargazing pauses)

5 p.m. - 7 p.m. Tickets are required.

Tickets will be distributed starting from 4:50 p.m.
(Venue: In front of the 50-cm Telescope dome)
In the case of rain or clouds, tickets may not be handed out.



Stargazing (Sports Field)

Stargazing and Equipment Exhibition by manufacturers and dealers.

1 p.m. - 7 p.m. Anyone can Stargaze.

Special Event "Uni-Tama"

The Universe + Ball (Tama) = Uni-Tama! We project the dynamic Universe on a huge balloon!

5:30 p.m. - 6:30 p.m.



Sports Field **Weather Permitting.** We use a balloon with a diameter of 4 meters!

Today's contents

Continue on next page.

W9 Solar Flare Telescope

Weather Permitting.

10 a.m. - 4 p.m. (Last entry 3:30 p.m.)

Solar Science Observatory

Introduction to the Solar Science Observatory.

You can visit solar observation facilities such as the Solar Flare Telescope.

Exhibition **Open Facilities** **Short Lecture**

N5 300-m Laser Interferometer Gravitational Wave Antenna

10 a.m. - 4 p.m. (Last entry 3:30 p.m.)

Gravitational Wave Project

Introduction to laser interferometer gravitational wave antennas "KAGRA" and "TAMA300."

You can visit "TAMA300" in the basement.

Exhibition **Open Facilities**

N3 Instrument Development Building

10 a.m. - 5 p.m. (Last entry 4:30 p.m.)

Advanced Technology Center

Open facility to develop and produce astronomy observation equipment.

There are exhibits on the latest projects.

Exhibition **Open Facilities** **Experiment** **Demonstration**

The Astronomical Society of Japan

10 a.m. - 5 p.m. (Last entry 4:30 p.m.)

Introduction to the Astronomical Society of Japan.

Exhibition **Book Sales**

W1 Subaru Building

10 a.m. - 5 p.m. (Last entry 4:30 p.m.)

Subaru Telescope/TMT-J Project Office

Introduction to Subaru Telescope and TMT(Thirty Meter Telescope).

Exhibition **Card Game** **Quiz** **Science Cafe**

Children can enjoy
Card Game



W2 ALMA Building

10 a.m. - 5 p.m. (Last entry 4:30 p.m.)

NAOJ ALMA Project

Introduction to the Atacama Large Millimeter/submillimeter Array (ALMA).

5000-m altitude ALMA site VR experience.

Let's receive radio waves with a wok! (**Weather Permitting.**)

Exhibition **VR** **Experiment**
Quiz **Coloring** **Short Lecture**

Children can enjoy
Coloring
ALMA Quiz



VR
Limited to age
7 years and older.
Tickets are required.



W4 Exhibition Room

10 a.m. - 5 p.m. (Last entry 4:30 p.m.)

(Lobby) TMT-J Project Office

Exhibition of TMT (Thirty Meter Telescope) model and mirror material.

Exhibition **Quiz**

(Theater Room) Public Relations Center

Astronomy for Everyone Let's connect with the world through astronomy activities.

Exhibition **Demonstration**

Children can enjoy
TMT Quiz



S4 4D2U Dome Theater

10 a.m. - 5 p.m.

(Lobby) 4D2U Project Mitaka VR

Let's experience the space simulator "Mitaka VR".

VR

VR
Limited to age
13 years and older.
Tickets are required.



S6 Observatory History Museum

10 a.m. - 5 p.m. (Last entry 4:30 p.m.)

(First floor) Exhibition of authentic Historical Books

Exhibition of real Historical Books today only ! Theme: "Subaru (M 45)" and 1882 Great Comet.

Exhibition

S2 South Building

10 a.m. - 5 p.m. (Last entry 4:30 p.m.)

(West side of the entrance) Division of Science

Outdoor science cafe.

Short Lecture **Science Cafe**

(Lobby) Astronomy Data Center

Let's search for galaxies in Subaru telescope/Hyper Suprime-Cam (HSC) image panels.

Game

Library

Let's read astronomy books!

Open Facilities

Center for Computational Astrophysics

You can visit up close with a computer cluster active in simulation astronomy.

Ticket distribution is on the east side of the entrance (outdoor).

Open Facilities **Exhibition**

The language of the
short lecture from
0:30 p.m. is English.



Any one can enjoy!



Tickets are required.



Institute of Astronomy, University of Tokyo

10 a.m. - 5 p.m. (Last entry 4:30 p.m.)

Welcome to the University of Tokyo !

We are tackling various mysteries in astronomy at the Kiso Observatory, TAO, and ASTE.

Open Facilities **Exhibition** **Quiz**

C4、C5 Main Building (South), (East)

10 a.m. - 5 p.m. (Last entry 4:30 p.m.)

(C4 Large conference Room) Mizusawa VLBI Observatory, RISE Project

Introduction to Very Long Baseline Interferometry (VLBI), Event Horizon Telescope (EHT),
Research of Interior Structure and Evolution of solar system bodies.(RISE)

Exhibition **Experiment** **Demonstration**

(C5 Conference Room 2, 3) Nobeyama Radio Observatory

The Nobeyama 45-m Radio Telescope was certified as an IEEE (The Institute of
Electrical and Electronics Engineers) milestone.

Exhibition **Experiment** **Origami**

(C5 Lecture Room, Conference Room 4) Astrobiology Center

Introduction to the Astrobiology Center.

Exhibition **Mystery**

Children can enjoy
Black hole model
Coloring

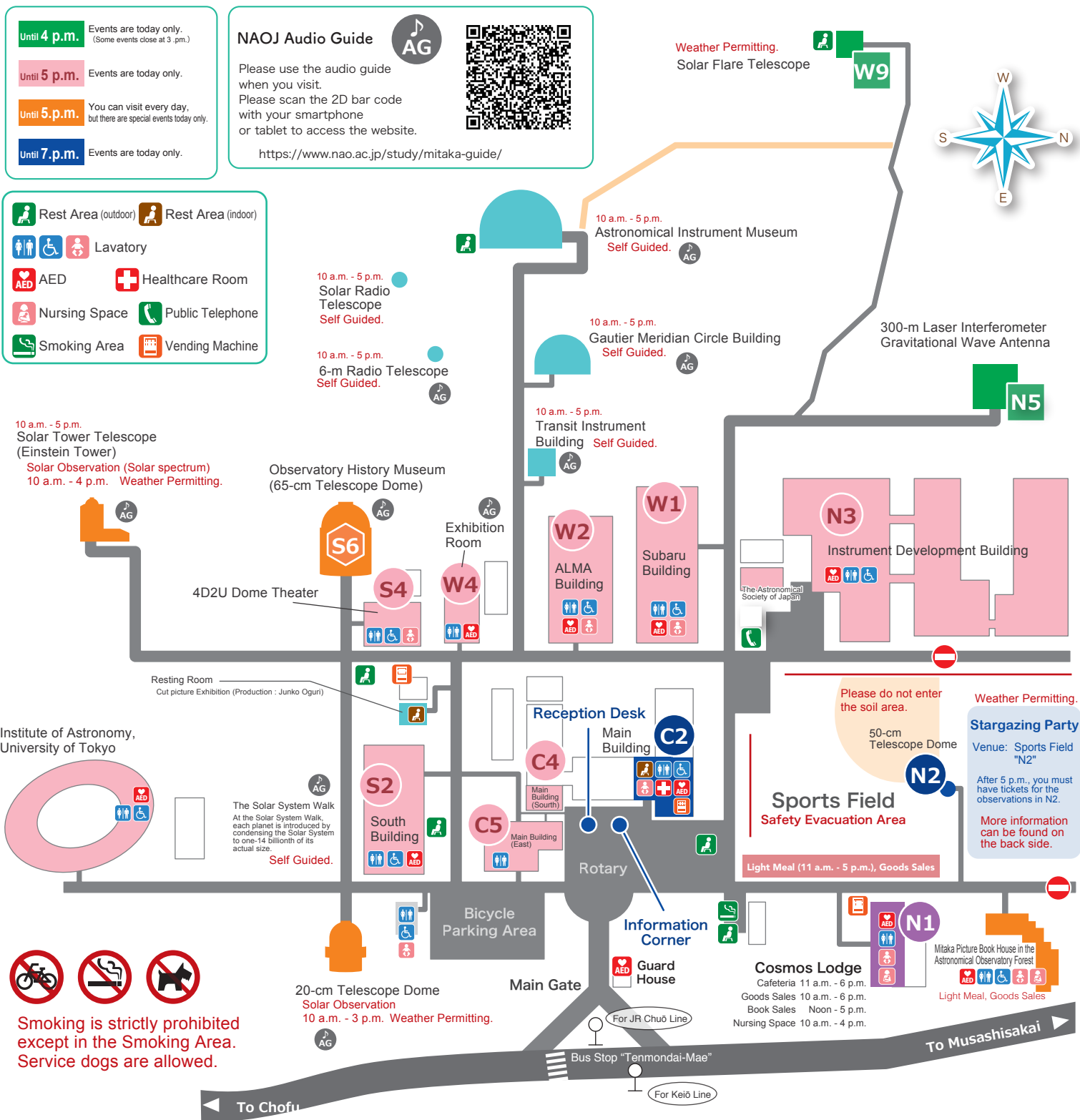


Children can enjoy
Radio telescope model
Origami (Tickets
are required)



Children can enjoy
Mystery





Mitaka Picture Book House in the Astronomical Observatory Forest

10 a.m. - 5 p.m.

Autumn Festival 2019

Woodworking, Goods sale etc...A lot of fun event sare planned ! (Autumn Festival is 11 a.m. - 4 p.m.)

Open Facilities

Handicraft

Children can enjoy

Handicraft

Picture-story show

C2 Main Building

10 a.m. - 7 p.m. (All of the events will end at 7 p.m. Please allow time to look around.)

(Lecture Room) Solar Science Observatory

Introduction to the Solar Science Observatory.

Exhibition

Experiment

Short Lecture

(Lobby) JASMINE Project

Introduction to Japan Astrometry Satellite Mission for Infrared Exploration (JASMINE).

Exhibition

Experiment

Demonstration

(Lobby) Noon - 7 p.m. Let's Ask a Researcher!

Let's ask the National Astronomical Observatory of Japan, the Astrobiology Center and the University of Tokyo researchers!