



Oct. 26 Start at 2 p.m.

STAFF

Languages Spoken

Staff members who can speak languages other than English wear stickers.
All staff members will make an effort to speak English.



Events that can be enjoyed entirely in English display this sign.

Short Lectures

Sorry! Short Lecture is in Japanese only.

4:15 p.m. - 5 p.m.

Institute of Astronomy, University of Tokyo

5:30 p.m. - 6:10 p.m.

NAOJ (W1 Subaru Building)

Today's Events

Children can enjoy.

W9 Solar Flare Telescope

2 p.m. - 4 p.m. (Last entry 3:30 p.m.)

Solar Science Observatory "Earth" Venue **Weather Permitting.**

Introduction to the Solar Science Observatory.

You can visit solar observation facilities such as the Solar Flare Telescope.

Exhibition Open Facilities

W2 ALMA Building

2 p.m. - 5 p.m. (Last entry 4:30 p.m.)

NAOJ Chile Observatory

Introduction to the ALMA.

Experiment Demonstration Coloring

W4 Exhibition Room

2 p.m. - 5 p.m. (Last entry 4:30 p.m.)

1 TMT-J Project Office

Exhibition of TMT (Thirty Meter Telescope) model and mirror material.

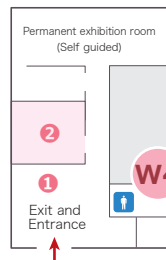
Open Facilities Exhibition **Let's complete the TMT primary mirror**

2 Public Relations Center

Astronomy for Everyone

Let's connect with the world through astronomy activities.

Exhibition Quiz



S6 Observatory History Museum

2 p.m. - 5 p.m. (Last entry 4:30 p.m.)

Exhibition of authentic Historical Books

Exhibition of real Historical Books today only! Theme: "The Solar System"

Exhibition

M Mitaka Picture Book House in the Astronomical Observatory Forest

10 a.m. - 5 p.m. (Last entry 4:30 p.m.)

Normal opening.

Exhibition

C2 Main Building

2 p.m. - 7 p.m. All of the events will end at 7 p.m. Please allow time to look around.

1 JASMINE Project Office

Introduction to Japan Astrometry Satellite Mission for INfrared Exploration (JASMINE).

Exhibition **Demonstration Experiment**

2 (3 p.m. - 7 p.m.) Let's Ask a Researcher!

Let's ask the National Astronomical Observatory of Japan researchers!

3 Solar Science Observatory "Space" Venue

Introduction to the Solar Science Observatory.

VR Stereoscopic VR Device

Limited to age 7 years and older. Parental consent required for guests under 13 years old.

Monoscopic VR Device

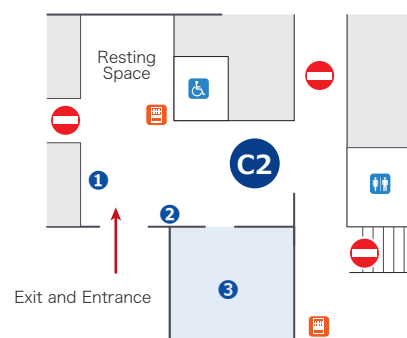
No age limit. Anyone can enjoy.

Exhibition

Demonstration

VR Experience

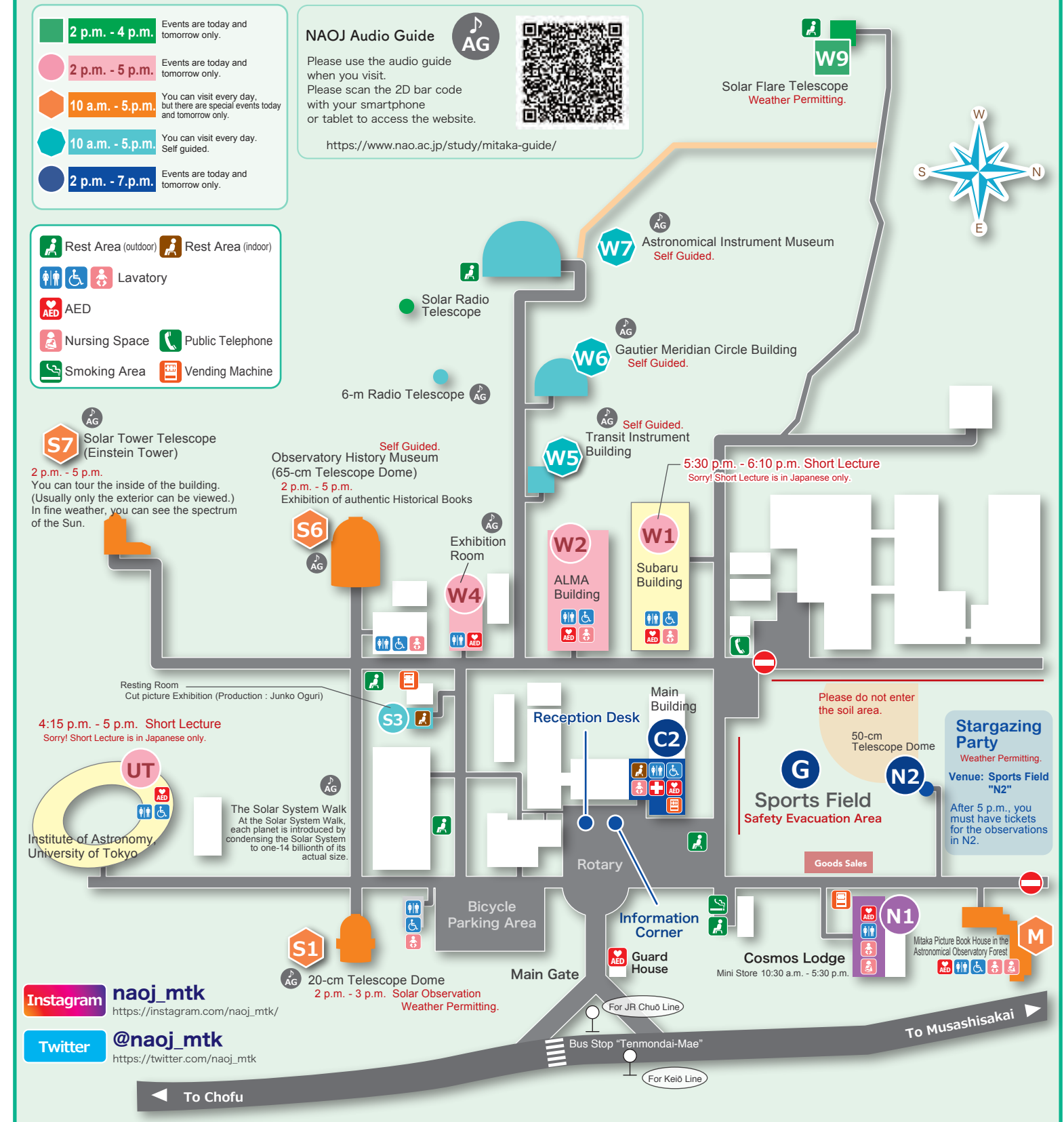
Short Lecture



Smoking is strictly prohibited except in the Smoking Area.
Service dogs are allowed.

Mitaka Open House Day 2018 Web site

<https://www.nao.ac.jp/en/open-day/2018/>



Stargazing Parties **Weather Permitting.**

N2 50-cm Telescope for Public Outreach

3 p.m. - 4 p.m. Anyone can Stargaze.

(4 p.m. - 5 p.m. Stargazing pauses)

5 p.m. - 7 p.m. Tickets are required.

Tickets will be distributed starting from 4:50 p.m.
(Venue: In front of the 50-cm Telescope dome)
In the case of rain or clouds, tickets may not be handed out.

Sports Field Stargazing and Equipment Exhibition by manufacturers and dealers.

3 p.m. - 7 p.m. Anyone can Stargaze.