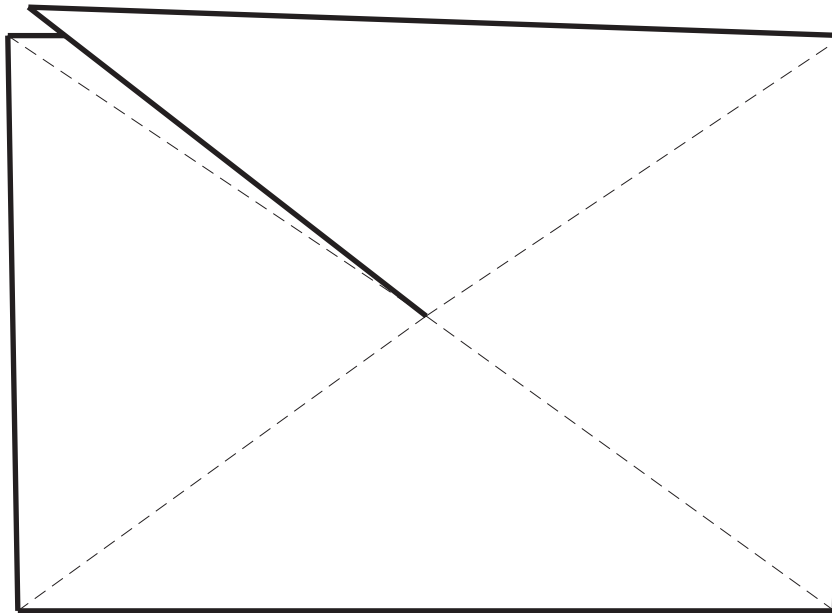
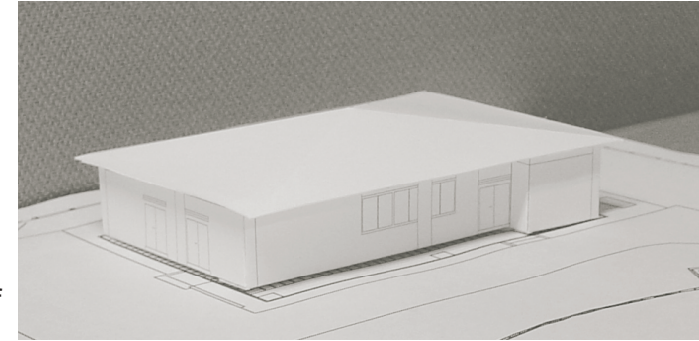


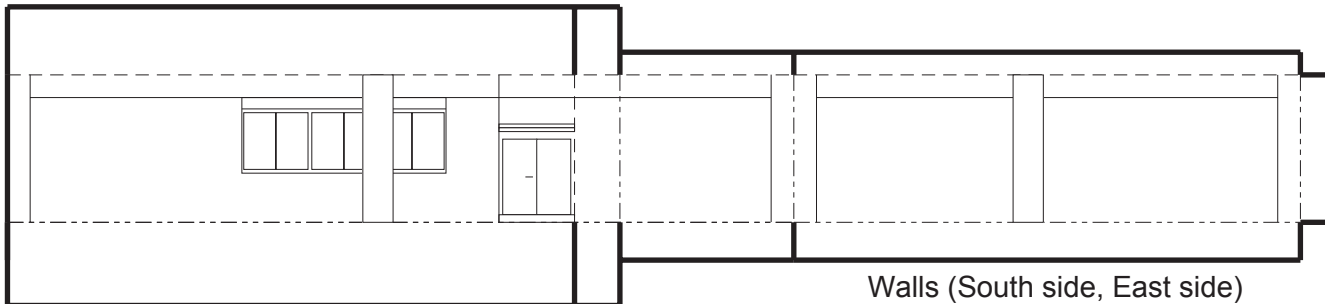
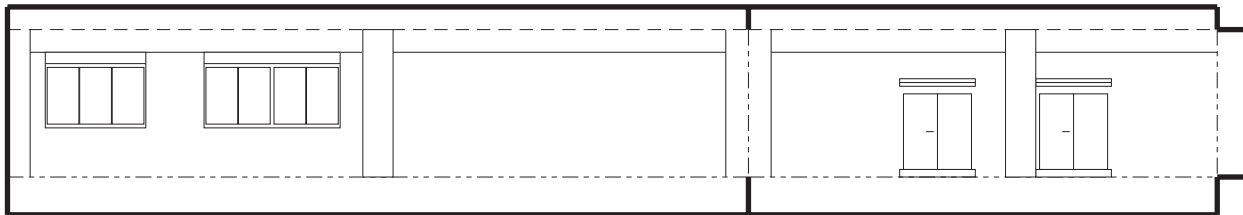
# VERA Antenna Paper Model Construction Project for a Child with Adult Assistance (Control Building)



Roof of  
Control Building

\*Compass directions of  
walls based on  
Ishigakijima Station

Walls (North side, West side)



Walls (South side, East side)

## Instructions

Materials and Tools: Paper cutter, glue

1. Making the roof : Cut out the roof along the thick black lines. Mountain fold along the dashed lines.

2. Making the Walls : Cut out each wall along the thick black lines. Valley fold along the dashed lines and mountain fold along the dot-dash lines. Glue the 2 walls together referring to the photo.

3. Assemble the entire model: Put glue on the outer side of the top of tabs, then line-up the roof and press it onto the tabs. If you want to color the roof, the real colors are:

Reddish brown: Ishigakijima Station,  
Ogasawara Station  
Green: Iriki Station