

Welcome to Mitaka Open House Day 2017 !

This annual open house showcases 4 institutes: the National Astronomical Observatory of Japan; the Astrobiology Center; the Institute of Astronomy, University of Tokyo; and the Department of Astronomical Science, School of Physical Sciences, the Graduate University for Advanced Studies (SOKENDAI).

There are many fun events, such as, public viewing of the research facilities, exhibitions, lectures, and so on. Stargazing parties will be held at the Sports Field, and exhibitors will offer goods for sale. In addition, the Mitaka Picture Book House in the Astronomical Observatory Forest will offer exhibitions. Let's enjoy the Mitaka Open House at the Mitaka Campus surrounded by nature.

Oct. 14, 2017

Detailed
Event Information

This is available at the information corner in the rotary.

S3 Resting Room (10 a.m. - 5 p.m.)

C2 Resting Space (10 a.m. - 7 p.m.)

N1 Resting Room for Parents and Children (10 a.m. - 4 p.m.)

Also please feel free to use the outdoor benches.

Where can I relax?

Injury and Illness

C2 Healthcare Room (There is nurse.)

Mitaka Open House Day 2017 Web site

<https://www.nao.ac.jp/en/open-day/2017/>

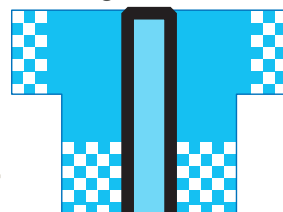
Instagram

naoj_mtk

https://instagram.com/naoj_mtk/

To participate in Mitaka Open House Day 2017, please post photos to Instagram. (Please use the hashtag #naojday)
When you post to Instagram, please show it to one of the event staff who have the hashtag written on their backs. They will present you with a souvenir!

This event staff
wear light blue coats.



STAFF

Languages Spoken

Staff members who can speak languages other than English wear stickers.

All staff members will make an effort to speak English.

Welcome!
English OK!

Events that can be enjoyed entirely in English display this sign.

Stargazing Parties **Weather Permitting.**



Solar observations (Using a Solar projection board)

10 a.m. - 3 p.m. **S1** 20-cm Telescope Dome



Solar observations (Using the Solar Radio Telescope)

10 a.m. - Noon
1 p.m. - 3 p.m. **SR** Solar Radio Telescope



Stargazing (Using the 50-cm Telescope)

N2 50-cm Telescope for Public Outreach

1 p.m. - 4:30 p.m. **Anyone can Stargaze.**

(4:30 p.m. - 5 p.m. Stargazing pauses)

5 p.m. - 7 p.m. **Tickets are required.**

Tickets will be distributed starting from 4:50 p.m.
(Venue: In front of the 50-cm Telescope dome)
In the case of rain or clouds, tickets may not be handed out.



Stargazing (Sports Field)

Stargazing and Equipment Exhibition by manufacturers and dealers.

1 p.m. - 7 p.m. **Anyone can Stargaze.**

Restrictions. Tickets are required. Children can enjoy.

S2 South Building 10 a.m. - 5 p.m. (Last entry 4:30 p.m.)

STAMP **Hot** **Cold** **1 Astronomy Data Center**
Galaxy finding game. **Game, Exhibition**

Hot **Cold** **2 Center for Computational Astrophysics**
You can visit up close with a computer cluster active in simulation astronomy.
There is a corner to experience operating the 4-dimensional digital universe viewer "Mitaka."
Open Facilities, Exhibition
"Mitaka" Operation Experience

Hot **Cold** **3 Petit-Library**
Let's read astronomy books! There is also a display of beautiful paper cutouts.
There is also an exhibition of paper cutouts in S3-Resting Room. (Production : Junko Oguri) **Open Facilities**

S4 4D2U Dome Theater 10 a.m. - 5 p.m. (Last entry 4:30 p.m.)

STAMP **Hot** **Cold** **Division of Theoretical Astronomy, 4D2U Project**
Researchers will lecture while you watch a 4-dimensional image of the Universe that has been created by supercomputer calculations.
Lecture requires tickets. Limited to elementary school students and older.
Science Cafe
3 p.m. - 3:40 p.m. "Measuring the Expansion of the Universe with Gravitational Lensing"
Open Facilities, Exhibition, Science Cafe **Short Lecture**

S6 Observatory History Museum 10 a.m. - 5 p.m. (Last entry 4:30 p.m.)

Exhibition of authentic Historical Books
Exhibition of real Historical Books today only!
Theme: "Achievements of NAGAKUBO Sekisui."
Exhibition

W4 Exhibition Room 10 a.m. - 5 p.m. (Last entry 4:30 p.m.)

Mild **1 TMT-J Project Office**
Exhibition of TMT (Thirty Meter Telescope) model and mirror material.
Open Facilities, Exhibition
Let's complete the TMT primary mirror

2 Public Relations Center
Astronomy for Everyone
Let's connect with the world through astronomy. **Exhibition**
Demonstration

UT Institute of Astronomy, University of Tokyo 10 a.m. - 5 p.m. (Last entry 4:30 p.m.)

STAMP **Hot** **Cold** **Welcome to the University of Tokyo !**
Let's join in solving the mysteries of the universe!
We will tackle every mystery of astronomy at the Kiso Observatory, TAO, and ASTE.
Open Facilities, Exhibition, Demonstration
Short Lecture, VR Experience, Quiz

C4 C5 Main Building (S),(E) 10 a.m. - 5 p.m. (Last entry 4:30 p.m.)

STAMP **Hot** **Cold** **1 Mizusawa VLBI Observatory RISE Project**
Introduction to Very Long Baseline Interferometry (VLBI), Event Horizon Telescope (EHT), Research of Interior Structure and Evolution of solar system bodies.(RISE) **Exhibition**
Experiment, Demonstration

2 Astrobiology Center
Introduction to Astrobiology Center. **Exhibition** **Mystery**

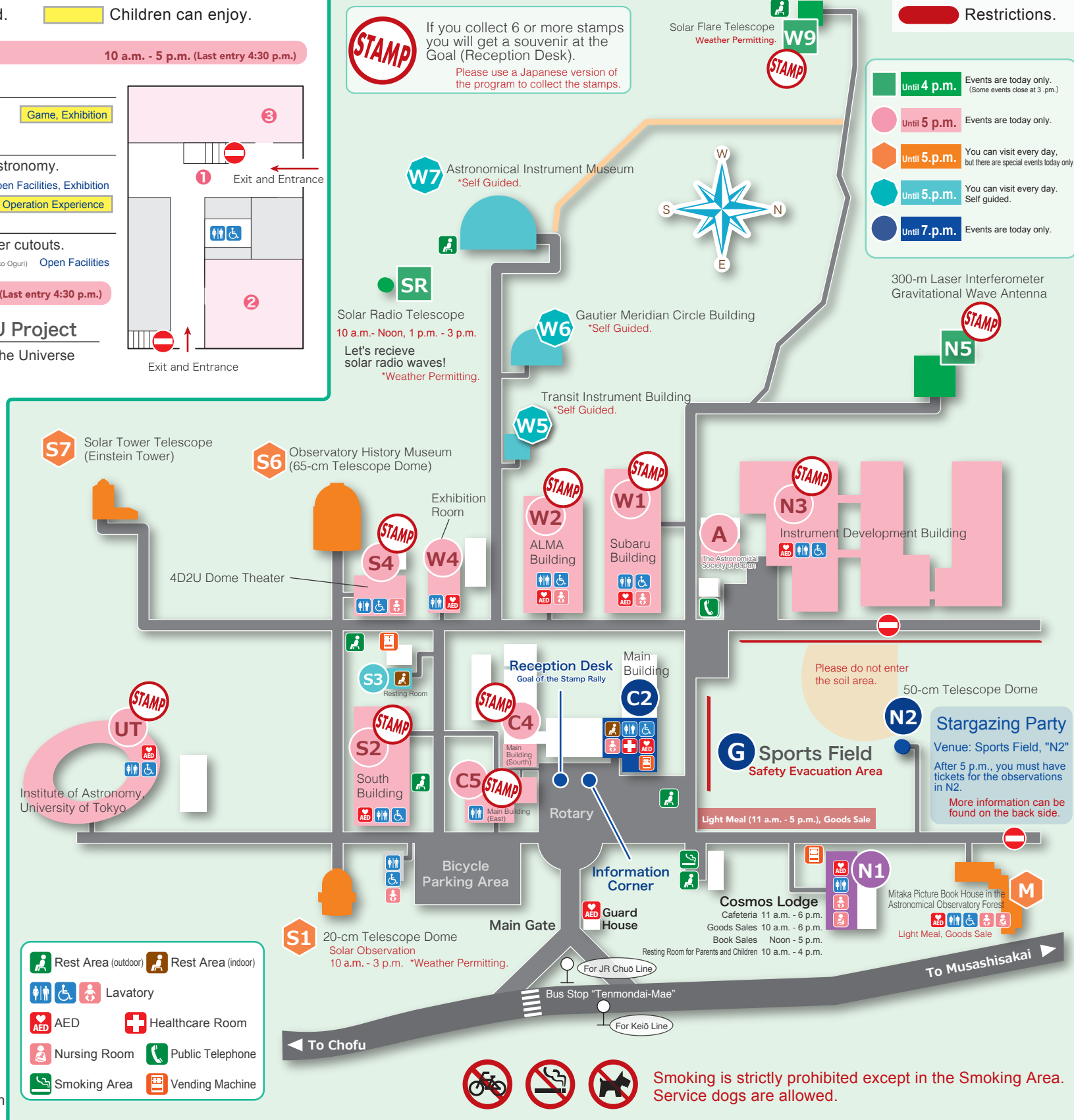
3 Nobeyama Radio Observatory
The Nobeyama 45-m Radio Telescope was certified as an IEEE (The Institute of Electrical and Electronics Engineers) milestone. **Exhibition** **Handicraft**
Quiz, Parabolic antenna experiment with Super Balls
Handicraft requires tickets. Limited to elementary and junior high school students.

4 Center for Computational Astrophysics, 4D2U Project
Experience the 4-dimensional digital universe viewer "Mitaka" by using a head-mounted display!
Requires tickets. Limited to 13 years of age or older. **Mitaka VR Experience**

2 Astrobiology Center
Introduction to Astrobiology Center. **Exhibition** **Mystery**

3 Nobeyama Radio Observatory
The Nobeyama 45-m Radio Telescope was certified as an IEEE (The Institute of Electrical and Electronics Engineers) milestone. **Exhibition** **Handicraft**
Quiz, Parabolic antenna experiment with Super Balls
Handicraft requires tickets. Limited to elementary and junior high school students.

4 Center for Computational Astrophysics, 4D2U Project
Experience the 4-dimensional digital universe viewer "Mitaka" by using a head-mounted display!
Requires tickets. Limited to 13 years of age or older. **Mitaka VR Experience**

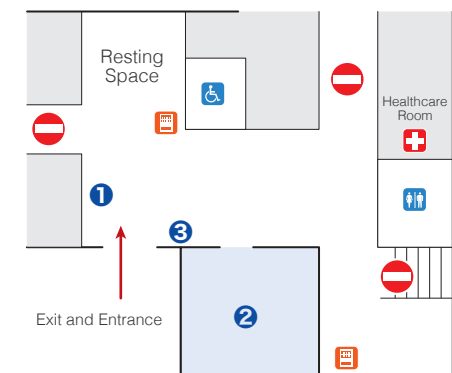


C2 Main Building 10 a.m. - 7 p.m. (All of the events will end at 7 p.m. Please allow time to look around.)

1 JASMINE Project Office
Introduction to Japan Astrometry Satellite Mission for INfrared Exploration (JASMINE). **Exhibition** **Demonstration** **Experiment**

Hot **2 Solar Science Observatory "Space" Venue**
Introduction to the Solar Science Observatory.
For VR experiences for people under 13 years old, we use a monoscopic VR device. **Exhibition** **Demonstration, Orienteering** **VR Experience**

3 11 a.m. - 7 p.m. Let's Ask a Researcher!
Let's ask the National Astronomical Observatory of Japan and the University of Tokyo researchers!



Restrictions. Tickets are required. Children can enjoy.

W9 Solar Flare Telescope 10 a.m. - 4 p.m. (Last entry 3:30 p.m.)

STAMP **Hot** **Solar Science Observatory "Earth" Venue**
Weather Permitting.
Introduction to the Solar Science Observatory.
You can visit solar observation facilities such as the Solar Flare Telescope.
Open Facilities **Short Lecture**
Quiz, Orienteering **Commemorative Photo**

N6 300-m Laser Interferometer Gravitational Wave Antenna 10 a.m. - 4 p.m.

STAMP **Gravitational Wave Project Office**
Introduction to laser interferometer gravitational wave antennas "KAGRA" and "TAMA300."
You can visit "TAMA300" in the basement.
Open Facilities **Exhibition** **Experiment** **Demonstration**

N3 Instrument Development Building 10 a.m. - 5 p.m. (Last entry 4:30 p.m.)

STAMP **Hot** **Cold** **Advanced Technology Center**
Open facility to develop and produce astronomy observation equipment.
There are exhibits on the latest projects.
Open Facilities **Demonstration** **Exhibition** **Experiment**

A The Astronomical Society of Japan 10 a.m. - 5 p.m.

Introduction to the Astronomical Society of Japan. **Exhibition** **Book Sale**

W1 Subaru Building 10 a.m. - 5 p.m. (Last entry 4:30 p.m.)

STAMP **1 Subaru Telescope**
2 TMT-J Project Office
3 Division of Optical and Infrared Astronomy
4 Extrasolar Planet Detection Project Office

Hot **Cold** **Introduction to Subaru Telescope and TMT(Thirty Meter Telescope).**
Let's make a spectrometer and observe the light!
Science Cafe **Exhibition**
Card Game, Handicraft **Experiment, Quiz**

5 Okayama Astrophysical Observatory
Introduction to Okayama Astrophysical Observatory and the 188-cm Reflector. **Exhibition**

W2 ALMA Building 10 a.m. - 5 p.m. (Last entry 4:30 p.m.)

STAMP **Gold** **NAOJ Chile Observatory**
Introduction to the Atacama Large Millimeter/submillimeter Array (ALMA).
5000-m altitude ALMA site VR experience. (Requires tickets. Limited to 13 years of age or older.)
Let's receive radio waves with a wok! (Weather Permitting.)
Exhibition **Short Lecture**
Experiment **Demonstration** **VR Experience**

M Mitaka Picture Book House in the Astronomical Observatory Forest 10 a.m. - 5 p.m. (Last entry 4:30 p.m.)

Autumn Festival 2017
Woodworking, Goods sale etc...A lot of fun events are planned ! (Autumn Festival is 11 a.m. - 4 p.m.)
Open Facilities **Exhibition** **Goods Sale** **Handicraft**

Special Event "Uni-Tama"

The Universe + Ball (Tama) = Uni-Tama!
We project the dynamic Universe on a huge balloon!
10:30 a.m. - 11:30 a.m., 4 p.m. - 5 p.m. W1 Subaru Building Large Seminar Room
We use a balloon with a diameter of 2 meters.
6:30 p.m. - 7 p.m. Uni-Tama open air G Sports Field
Weather Permitting.
We use a balloon with a diameter of 4 meters!

Hot Exhibition about the hot Universe. **Mild** Exhibition about the mild Universe. **Cold** Exhibition about the cold Universe.
Electromagnetic Waves
Short Wavelength = Hot Long Wavelength = Cold
The difference in temperature, such as hot and cold, corresponds to the differences in wavelength of electromagnetic waves.