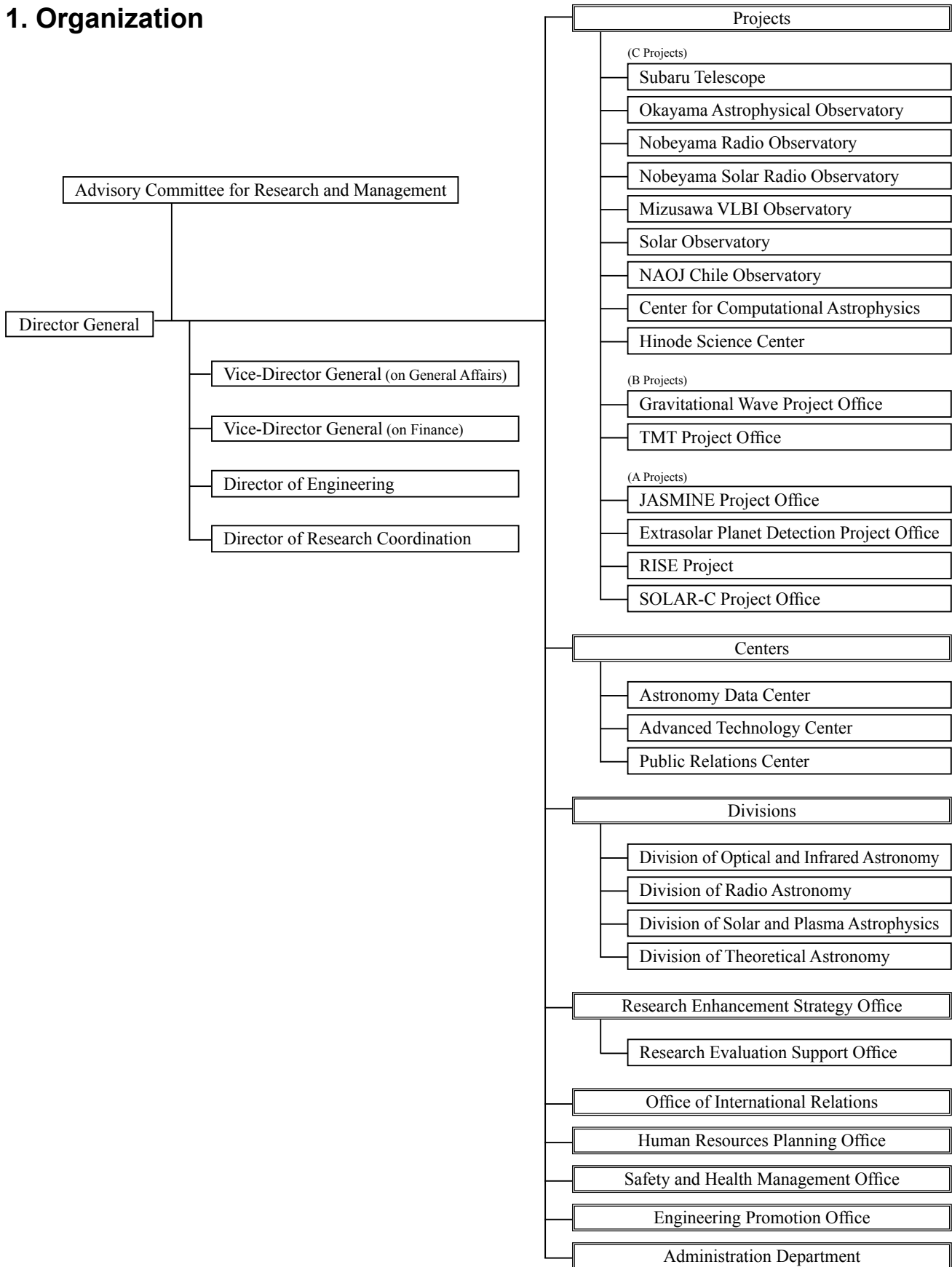


III Organization

1. Organization



2. Number of Staff Members

(2015/3/31)

Regular Employees	
Director General	1
Research and Academic Staff	158
Professor	29
Executive Engineer	0
Associate Professor	36
Chief Research Engineer	11
Assistant Professor	62
Research Associate	0
Research Engineer	20
Engineering Staff	37
Administrative Staff	55
Research Administrator Staff	8
Employees on Annual Salary System	63
Fixed-term Employees	
Full-time Contract Employees	79
Part-time Contract Employees	148

3. Executives

Director General	Hayashi, Masahiko
Vice-Director General	
on General Affairs	Watanabe, Junichi
on Finance	Kobayashi, Hideyuki
Director of Engineering	Takami, Hideki
Director of Research Coordination	Gouda, Naoteru

4. Research Departments

Projects

C Projects

Subaru Telescope

Director	Arimoto, Nobuo
Professor	Arimoto, Nobuo
Professor	Iye, Masanori
Professor	Mizumoto, Yoshihiko
Professor	Ohashi, Nagayoshi
Professor	Usuda, Tomonori
Associate Professor	Aoki, Wakou
Associate Professor	Hayashi, Saeko
Associate Professor	Ichikawa, Shin-ichi
Associate Professor	Iwata, Ikuru
Associate Professor	Kashikawa, Nobunari
Associate Professor	Kodama, Tadayuki
Associate Professor	Nomaru, Junichi
Associate Professor	Takato, Naruhisa
Associate Professor	Takeda, Yoichi
Associate Professor	Terada, Hiroshi
Chief Research Engineer	Yutani, Masami
Assistant Professor	Hayano, Yutaka
Assistant Professor	Imanishi, Masatoshi
Assistant Professor	Komiyama, Yutaka
Assistant Professor	Minowa, Yosuke
Assistant Professor	Okita, Hirofumi
Assistant Professor	Pyo, Tae-soo
Assistant Professor	Shirasaki, Yuji
Assistant Professor	Yagi, Masafumi
Research Engineer	Tazawa, Seiichi
Chief Engineer	Kurakami, Tomio
Chief Engineer	Namikawa, Kazuhito
Chief Engineer	Negishi, Satoru
Chief Engineer	Omata, Koji
Chief Engineer	Tamura, Tomonori
Engineer	Sato, Tatsuhiro
Specially Appointed Research Staff	Tadaki Kenichi
Postdoctoral Fellow	Yabe, Kiyoto
Research Expert	Yamanoi, Hitomi
Research Supporter	Schramm, Malte
Administrative Supporter	Kuwata, Hitomi
Administrative Supporter	Mochinaga, Chizuru
Administrative Supporter	Noguchi, Masumi
Administrative Supporter	Takamoto, Masami
Administrative Supporter	Yamada, Narumi
Administrative Supporter	Yoshida, Chie

Administration Department

Manager	Kobayashi, Hideki
Manager	Seto, Yoji
General Affairs Section	
Chief	Kobayashi, Hideki

Chief Staff	Seto, Yoji
	Sugawara, Satoshi
Accounting Section	
Chief	Furuhata, Tomoyuki
RCUH	
RCUH	Alpiche, Dex
RCUH	Aoki, Kentaro
RCUH	Aso, Yusuke
RCUH	Balbarino, Michael
RCUH	Berghuis, Jennie
RCUH	Bergstrom, Andrew (Will)
RCUH	Birchall, Daniel
RCUH	Castro, Timothy
RCUH	Clergeon, Christophe
RCUH	Cook, David
RCUH	Currie, Thayne
RCUH	Doi, Yoshiyuki
RCUH	Doughty, Danielle
RCUH	Elms, Brian
RCUH	Endo, Banri
RCUH	Fabricius, Maximilian
RCUH	Ferre, Mateu Anna
RCUH	Ferreira, James
RCUH	Finet, Francois
RCUH	Formanek, Keiko
RCUH	Frayser, Suzanne
RCUH	Fujiwara, Hideaki
RCUH	Fujiyoshi, Takuya
RCUH	Gorman, William
RCUH	Guthier, Debbie
RCUH	Guyon, Olivier
RCUH	Hasegawa, Andrew
RCUH	Hasegawa, Kumiko
RCUH	Hattori, Takashi
RCUH	Helminiak, Krzysztof
RCUH	Hopkins, James
RCUH	Inagaki, Takeshi
RCUH	Iwasaki, Alan
RCUH	Jeschke, Eric
RCUH	Jovanovic, Nemanja
RCUH	Kackley, Russell
RCUH	Kakazu, Yuko
RCUH	Kim, Ji Hoon
RCUH	Koshida, Shintaro
RCUH	Koyamatsu, Shin
RCUH	Kudo, Tomoyuki
RCUH	Kyono, Eiji
RCUH	Lemmen, Michael
RCUH	Leonard, Alex
RCUH	Letawsky, Michael
RCUH	Lozi, Julien
RCUH	Micheva, Genoveva

RCUH	Morris, Marita
RCUH	Murai, Rieko
RCUH	Nabeshima, Yoshitake
RCUH	Nakano, Wakako
RCUH	Nakata, Fumiaki
RCUH	Niimi, Yuka
RCUH	Nishimura, Tetsuro
RCUH	Ono, Yoshito
RCUH	Otsuka, Masaaki
RCUH	Otsuki, Noriko
RCUH	Oya, Makoto
RCUH	Park, Hong Soo
RCUH	Pathak, Prashant
RCUH	Ramos, Lucio
RCUH	Roth, Noriko
RCUH	Saito, Yuriko
RCUH	Shimakawa, Rythm
RCUH	Shubert, Kiaina
RCUH	Singh, Garima
RCUH	Spencer, Robin
RCUH	Sur, Ryoko
RCUH	Tait, Philip
RCUH	Tajitsu, Akito
RCUH	Takiura, Koki
RCUH	Tamae, Richard
RCUH	Tanaka, Makoto
RCUH	Tanaka, Yoko
RCUH	Terai, Tsuyoshi
RCUH	Thunell, Johnathan
RCUH	Tomono, Daigo
RCUH	Toyofuku, Ralph
RCUH	Tsang, Emiko
RCUH	Wages, Keith
RCUH	Walawender, Joshua
RCUH	Weber, Mark
RCUH	Williams, Joshua
RCUH	Winegar, Tom
RCUH	Wung, Matthew
RCUH	Yamazaki, Kohei
RCUH	Yeh, Sherry (Chia-Chen)

Hyper Supreme-Cam

Director	Miyazaki, Satoshi
Associate Professor	Takata, Tadafumi
Assistant Professor	Furusawa, Hisanori
Assistant Professor	Komiyama, Yutaka
Assistant Professor	Nakaya, Hidehiko
Specially Appointed Assistant Professor	Tanaka, Masayuki
Chief Engineer	Kamata, Yukiko
Chief Engineer	Uraguchi, Fumihiro
Postdoctoral Fellow	Okura, Yuki
Research Expert	Kawanomoto, Satoshi
Research Expert	Koike, Michitaro
Research Expert	Mineo, Sogo
Research Expert	Yamada, Yoshihiko
Administrative Supporter	Uekiyo, Hatsue

Okayama Astrophysical Observatory

Director	Izumiura, Hideyuki
Associate Professor	Izumiura, Hideyuki
Associate Professor	Ukita, Nobuharu
Chief Research Engineer	Koyano, Hisashi
Assistant Professor	Yanagisawa, Kenshi
Specially Appointed Assistant Professor	Kambe, Eiji
Engineer	Tsutsui, Hironori
Postdoctoral Fellow	Fukui, Akihiko
Research Expert	Kuroda, Daisuke
Research Expert	Maehara, Hiroyuki
Research Supporter	Kamiya, Koki
Research Supporter	Shimizu, Yasuhiro
Research Supporter	Toda, Hiroyuki

Administration Office

Administration Section	
Chief	Setou, Nobuyoshi
Administrative Supporter	Katayama, Kumiko
Administrative Supporter	Shibukawa, Hiroko
Administrative Supporter	Yamashita, Ayako
Administrative Maintenance Staff	Koyama, Shoji
Administrative Maintenance Staff	Watanabe, Noriaki

Nobeyama Radio Observatory

Director	Saito, Masao
Associate Professor	Nakamura, Fumitaka
Associate Professor	Saito, Masao
Chief Research Engineer	Iwashita, Hiroyuki
Chief Research Engineer	Kanzawa, Tomio
Assistant Professor	Ishizuki, Sumio
Assistant Professor	Oshima, Tai
Assistant Professor	Takano, Shuro
Assistant Professor	Umemoto, Tomofumi
Specially Appointed Assistant Professor	Minamidani, Tetsuhiro
Research Engineer	Mikoshiba, Hiroshi
Senior Engineer	Miyazawa, Kazuhiko
Chief Engineer	Handa, Kazuyuki
Chief Engineer	Miyazawa, Chieko
Engineer	Nishitani, Hiroyuki
Engineer	Wada, Takuya
Postdoctoral Fellow	Morokuma, Kana
Specially Appointed Research Staff	Nishimura, Atsushi
Specially Appointed Research Staff	Takekoshi, Tatsuya
Research Expert	Kinugasa, Kenzo
Research Expert	Maekawa, Jun
Research Expert	Oya, Masaaki
Research Expert	Takahashi, Shigeru
Research Expert	Tatamitani, Yoshio
Technical Expert	Nishioka, Makiko
Research Supporter	Arai, Hitoshi

Administrative Supporter	Hatakeyama, Eiko
Administrative Supporter	Ide, Hidemi
Consultant	Naito, Akihiko
Consultant	Saito, Yasufumi
Research Assistant Staff	Mizuno, Izumi

Administration Office

Deputy Manager	Otsuka, Tomoyoshi
General Affairs Section	
Chief	Otsuka, Tomoyoshi
Administrative Supporter	Kikuchi, Kikue
Administrative Supporter	Yoda, Chizuko
Administrative Maintenance Staff	Fuji, Shigeru
Administrative Maintenance Staff	Ide, Hiroko
Administrative Maintenance Staff	Kadoshima, Junko
Administrative Maintenance Staff	Kikuchi, Michiko
Administrative Maintenance Staff	Kikuchi, Tsuyoshi
Administrative Maintenance Staff	Koike, Ikuko
Administrative Maintenance Staff	Kurane, Tsugeru
Administrative Maintenance Staff	Saito, Arayo
Administrative Maintenance Staff	Tsuchiya, Junko
Administrative Maintenance Staff	Yoshizawa, Usaji
Accounting Section	
Chief	Sasaki, Hiroaki
Chief	Shimizu, Hidetoshi
Staff	Kobayashi, Kazuhito
Administrative Supporter	Kodaira, Toshiko
Administrative Supporter	Takasawa, Mitsue
Administrative Supporter	Tokui, Chisato

Nobeyama Solar Radio Observatory

Director	Hanaoka, Yoichiro
Professor	Shibasaki, Kiyoto
Chief Research Engineer	Kawashima, Susumu
Assistant Professor	Shimojo, Masumi
Senior Engineer	Shinohara, Noriyuki
Postdoctoral Fellow	Iwai, Kazumasa
Administrative Supporter	Shinkai, Hisako
Administrative Supporter	Takemura, Miwako

Mizusawa VLBI Observatory

Acting Director	Takami, Hideki
Professor	Honma, Mareki
Professor	Kobayashi, Hideyuki
Associate Professor	Agata, Hidehiko
Associate Professor	Hanada, Hideo
Associate Professor	Shibata, Katsunori

Chief Research Engineer	Sato, Katsuhisa
Assistant Professor	Hagiwara, Yoshiaki
Assistant Professor	Hirota, Tomoya
Assistant Professor	Jike, Takaaki
Assistant Professor	Kameya, Osamu
Assistant Professor	Kono, Yusuke
Assistant Professor	Sunada, Kazuyoshi
Assistant Professor	Tamura, Yoshiaki
Research Engineer	Asari, Kazuyoshi
Research Engineer	Fukushima, Hideo
Research Engineer	Ishikawa, Toshiaki
Research Engineer	Oshima, Norio
Research Engineer	Suzuki, Shunsaku
Engineer	Shizugami, Makoto
Engineer	Ueno, Yuji
Postdoctoral Fellow	Matsumoto, Naoko
Postdoctoral Fellow	Sawada, Satoko
Specially Appointed Research Staff	Kim, Jeoung Sook
Specially Appointed Research Staff	Nagayama, Takumi
Specially Appointed Research Staff	Tazaki, Fumie
Specially Appointed Research Staff	Wu, Yuanwei
Specially Appointed Senior Specialist	Miura, Mitsuo
Research Expert	Hanayama, Hidekazu
Research Expert	Kanaguchi, Masahiro
Research Expert	Oyama, Tomoaki
Technical Expert	Funayama, Hiroshi
Technical Expert	Kuji, Seisuke
Technical Expert	Miyaji, Takeshi
Administrative Expert	Oikawa, Shinichi
Research Supporter	Asakura, Yu
Research Supporter	Isono, Yoko
Research Supporter	Matsukawa, Yuki
Research Supporter	Yamashita, Kazuyoshi
Research Supporter	Yamauchi, Aya
Administrative Supporter	Komori, Akiyo
Administrative Supporter	Yoshihara, Keiko

Administration Office

Deputy Manager	Hommyo, Susumu
General Affairs Section	
Chief	Hommyo, Susumu
Staff	Iida, Naoto
Administrative Supporter	Kikuchi, Sachiko
Administrative Supporter	Oizumi, Yuka
Administrative Supporter	Sasaki, Mie
Accounting Section	
Chief	Koseki, Tatsuya
Administrative Supporter	Sasaki, Mie
Administrative Supporter	Takahashi, Yumi

Ishigakijima Astronomical Observatory

Head	Miyaji, Takeshi
Associate Professor	Agata, Hidehiko

Research Engineer	Fukushima, Hideo
Research Engineer	Oshima, Norio
Research Expert	Hanayama, Hidekazu
Technical Expert	Miyaji, Takeshi
Time Keeping Office	
Head	Sato, Katsuhisa
Research Engineer	Asari, Kazuyoshi

Solar Observatory	
Director	Hanaoka, Yoichiro
Professor	Sakurai, Takashi
Professor	Shibasaki, Kiyoto
Associate Professor	Hanaoka, Yoichiro
Associate Professor	Suematsu, Yoshinori
Chief Engineer	Shinoda, Kazuya
Postdoctoral Fellow	Otsuji, Kenichi
Research Expert	Kitagawa, Naomasa
Research Expert	Morita, Satoshi
Research Expert	Yaji, Kentaro
Administrative Supporter	Nishino, Hideko
Administrative Supporter	Sugimoto, Junko

NAOJ Chile Observatory	
Director	Hasegawa, Tetsuo
Professor	Hasegawa, Tetsuo
Professor	Iguchi, Satoru
Professor	Kameno, Seiji
Professor	Ogasawara, Ryusuke
Professor	Sakamoto, Seiichi
Professor	Tatematsu, Kenichi
Associate Professor	Asayama, Shinichiro
Associate Professor	Iono, Daisuke
Associate Professor	Kiuchi, Hitoshi
Associate Professor	Kosugi, George
Associate Professor	Mizuno, Norikazu
Associate Professor	Ohishi, Masatoshi
Associate Professor	Okuda, Takeshi
Specially Appointed Associate Professor	Kawamura, Akiko
Specially Appointed Associate Professor	Komugi, Shinya
Specially Appointed Associate Professor	Nagai, Hiroshi
Specially Appointed Associate Professor	Shinnaga, Hiroko
Chief Research Engineer	Kawashima, Susumu
Chief Research Engineer	Kikuchi, Kenichi
Chief Research Engineer	Watanabe, Manabu
Assistant Professor	Espada Fernandez, Daniel
Assistant Professor	Ezawa, Hajime
Assistant Professor	Hiramatsu, Masaaki
Assistant Professor	Hirota, Akihiko
Assistant Professor	Kamazaki, Takeshi
Assistant Professor	Matsuda, Yuichi
Assistant Professor	Nakanishi, Kouichiro

Assistant Professor	Oshima, Tai
Assistant Professor	Sawada, Tsuyoshi
Assistant Professor	Shimojo, Masumi
Assistant Professor	Sugimoto, Masahiro
Assistant Professor	Takahashi, Satoko
Assistant Professor	Umemoto, Tomofumi
Specially Appointed Assistant Professor	Akiyama, Eiji
Specially Appointed Assistant Professor	Chibueze, James Okwe
Specially Appointed Assistant Professor	Erik, Muller
Specially Appointed Assistant Professor	Hatsukade, Bunyo
Specially Appointed Assistant Professor	Saigo, Kazuya
Research Engineer	Ashitagawa, Kyoko
Research Engineer	Nakazato, Takeshi
Senior Engineer	Kobiki, Toshihiko
Senior Engineer	Nakamura, Kyoko
Chief Engineer	Kato, Yoshihiro
Specially Appointed Research Staff	Ao, Yiping
Specially Appointed Research Staff	Herrera Contreras, Cinthya Natalia
Specially Appointed Research Staff	Kurono, Yasutaka
Specially Appointed Research Staff	Miura, Rie
Specially Appointed Research Staff	Sanhueza Nunez, Patricio Andres
Specially Appointed Research Staff	Ueda, Junko
Specially Appointed Senior Specialist	Fukui, Hideharu
Specially Appointed Senior Specialist	Kawasaki, Wataru
Specially Appointed Senior Specialist	Kobayashi, Tsuyoshi
Specially Appointed Senior Specialist	Kuniyoshi, Masaya
Specially Appointed Senior Specialist	Matsui, Takayuki
Specially Appointed Senior Specialist	Morita, Eisuke
Specially Appointed Senior Specialist	Saito, Motoi
Specially Appointed Senior Specialist	Shimoda, Takanobu
Specially Appointed Senior Specialist	So, Ryoken
Specially Appointed Senior Specialist	Sugimoto, Kanako
Specially Appointed Senior Specialist	Yamada, Masumi
Research Expert	Fujimoto, Yasuhiro

Research Expert	Inoe, Norio
Research Expert	Ishimaru, Fumiaki
Research Expert	Kawakami, Shinnosuke
Research Expert	Nakamura, Koji
Research Expert	Noma, Naoko
Research Expert	Nukatani, Sorahiko
Research Expert	Sakuma, Naoko
Research Expert	Shibuya, Masaru
Research Expert	Tomimuro, Hisashi
Research Expert	Yasui, Takashi
Administrative Expert	Kamada, Masako
Research Supporter	Kusuno, Kozue
Research Supporter	Uchida, Ayako
Research Supporter	Yamazaki, Toshitaka
Administrative Supporter	Kono, Izumi
Administrative Supporter	Matsunaga, Choko
Administrative Supporter	Saito, Naoko
Administrative Supporter	Sakurai, Junko
Administrative Supporter	Uchida, Rena
Research Assistant Staff	Onishi, Kyoko
AUI Staff	Gabriela Krapivka Flores
AUI Staff	Joaquin Collao
AUI Staff	Lorena Toro
AUI Staff	Maria Angelica Ramos
AUI Staff	Nicolas Silva
AUI Staff	Oscar Mendez
AUI Staff	Veronica Gareca

Administration Department

Manager	Yamaguchi, Takahiro
General Affairs Section	
Chief	Tsukano, Satomi
Accounting Section	
Chief	Yamaguchi, Takahiro
Staff	Hiramatsu, Naoya

Center for Computational Astrophysics

Director	Kokubo, Eiichiro
Professor	Kokubo, Eiichiro
Professor	Tomisaka, Kohji
Assistant Professor	Inoe, Tsuyoshi
Assistant Professor	Ito, Takashi
Assistant Professor	Kudo, Takahiro
Assistant Professor	Ohsuga, Ken
Assistant Professor	Tanaka, Masaomi
Specially Appointed Assistant Professor	Takahashi, Hiroyuki
Specially Appointed Assistant Professor	Takiwaki, Tomoya
Specially Appointed Research Staff	Furusawa, Shun
Specially Appointed Research Staff	Kawashima, Tomohisa
Postdoctoral Fellow	Ishitsu, Naoki
Research Expert	Kato, Tsunehiko
Research Expert	Nakayama, Hirotaka

Research Expert	Narazaki, Yayoi
Research Expert	Oshino, Shoichi
Research Expert	Wakita, Shigeru
Research Supporter	Fukushi, Hinako
Research Supporter	Hasegawa, Yukihiko
Research Supporter	Matsumoto, Yuji
Administrative Supporter	Kimura, Yuko

Hinode Science Center

Director	Watanabe, Tetsuya
Professor	Sakurai, Takashi
Professor	Shibasaki, Kiyoto
Specially Appointed Professor	Kuhn, Jeffrey Richard
Specially Appointed Professor	Uitenbroek, Han
Associate Professor	Hara, Hirohisa
Associate Professor	Sekii, Takashi
Associate Professor	Suematsu, Yoshinori
Assistant Professor	Ishikawa, Ryoko
Assistant Professor	Kano, Ryohei
Assistant Professor	Katsukawa, Yukio
Assistant Professor	Kubo, Masahito
Assistant Professor	Shimojo, Masumi
Research Engineer	Bando, Takamasa
Specially Appointed Research Staff	Antolin, Patrick
Technical Expert	Inoe, Naoko
Research Supporter	Nakada, Yuichiro

B Projects

Gravitational Wave Project Office

Director	Flaminio, Raffaele
Specially Appointed Professor	Flaminio, Raffaele
Associate Professor	Aso, Yoichi
Affiliated Associate Professor	Ando, Masaki
Specially Appointed Associate Professor	Barsuglia, Matteo
Assistant Professor	Akutsu, Tomotada
Assistant Professor	Takahashi, Ryutaro
Assistant Professor	Tatsumi, Daisuke
Assistant Professor	Ueda, Akitoshi
Research Engineer	Ishizaki, Hideharu
Research Engineer	Torii, Yasuo
Chief Engineer	Tanaka, Nobuyuki
Specially Appointed Research Staff	Barton, Mark Andrew
Specially Appointed Research Staff	Pena Arellano, Fabian Erasmio
Specially Appointed Research Staff	Zeidler, Simon
Specially Appointed Senior Specialist	Hirata, Naoatsu
Research Supporter	Nakamura, Koji

Administrative Supporter	Kondo, Mihoko
Administrative Supporter	Yoshizumi, Mizuho
Secondment (to The University of Tokyo)	
Assistant Professor	Oishi, Naoko

TMT Project Office

Director	Usuda, Tomonori
Professor	Iye, Masanori
Professor	Takami, Hideki
Professor	Usuda, Tomonori
Professor	Yamashita, Takuya
Associate Professor	Aoki, Wakou
Associate Professor	Kashikawa, Nobunari
Associate Professor	Kodama, Tadayuki
Associate Professor	Kosugi, George
Associate Professor	Miyazaki, Satoshi
Associate Professor	Takato, Naruhisa
Associate Professor	Terada, Hiroshi
Specially Appointed Associate Professor	Packham, Christopher Charles
Chief Research Engineer	Miyashita, Takaaki
Assistant Professor	Hayano, Yutaka
Assistant Professor	Imanishi, Masatoshi
Assistant Professor	Sugimoto, Masahiro
Assistant Professor	Suzuki, Ryuji
Assistant Professor	Yagi, Masafumi
Postdoctoral Fellow	Hashimoto, Tetsuya
Postdoctoral Fellow	Wanajo, Shinya
Specially Appointed Research Staff	Harakawa, Hiroki
Specially Appointed Senior Specialist	Chapman, Junko
Specially Appointed Senior Specialist	Kozu, Akihito
Specially Appointed Senior Specialist	Sugiyama, Motokuni
Research Expert	Ishii, Miki
Research Expert	Ozaki, Shinobu
Research Supporter	Inatani, Junji
Research Supporter	Rusu, Cristian Eduard
Public Outreach Official	Tajima, Toshiyuki
Administrative Supporter	Haranaka, Miyuki
Administrative Supporter	Yamaguchi, Chiyu

A Projects

JASMINE Project Office

Director	Gouda, Naoteru
Professor	Gouda, Naoteru
Professor	Kobayashi, Yukiyasu
Associate Professor	Hanada, Hideo
Associate Professor	Takato, Naruhisa
Assistant Professor	Araki, Hiroshi
Assistant Professor	Noda, Hiroতো
Assistant Professor	Tsujimoto, Takuji
Assistant Professor	Yano, Taihei
Chief Research Engineer	Tsuruta, Seiitsu

Research Engineer	Asari, Kazuyoshi
Specially Appointed Research Staff	Shirahata, Mai
Specially Appointed Research Staff	Yamaguchi, Masaki
Research Supporter	Utsunomiya, Shin
Technical Supporter	Kashima, Shingo

Extrasolar Planet Detection Project Office

Director	Tamura, Motohide
Professor	Kokubo, Eiichiro
Affiliated Professor	Tamura, Motohide
Specially Appointed Professor	Ojha, Devendra Kumar
Associate Professor	Izumiura, Hideyuki
Assistant Professor	Kotani, Takayuki
Assistant Professor	Morino, Junichi
Assistant Professor	Nakajima, Tadashi
Assistant Professor	Nishikawa, Jun
Assistant Professor	Suto, Hiroshi
Specially Appointed Assistant Professor	Narita, Norio
Specially Appointed Research Staff	Kandori, Ryo
Specially Appointed Research Staff	Omiya, Masashi
Research Expert	Kusakabe, Nobuhiko
Research Supporter	Kurokawa, Takashi
Research Assistant Staff	Oya, Masato

RISE Project

Director	Namiki, Noriyuki
Professor	Gouda, Naoteru
Professor	Kobayashi, Yukiyasu
Professor	Kokubo, Eiichiro
Professor	Namiki, Noriyuki
Associate Professor	Hanada, Hideo
Associate Professor	Matsumoto, Koji
Chief Research Engineer	Tsuruta, Seiitsu
Assistant Professor	Araki, Hiroshi
Assistant Professor	Kono, Yusuke
Assistant Professor	Noda, Hiroতো
Assistant Professor	Tsujimoto, Takuji
Assistant Professor	Yano, Taihei
Research Engineer	Asari, Kazuyoshi
Research Engineer	Tazawa, Seiichi
Postdoctoral Fellow	Oshigami, Shoko
Specially Appointed Research Staff	Yamada, Ryuhei
Research Expert	Kikuchi, Fuyuhiko
Administrative Supporter	Sato, Sayaka

SOLAR-C Project Office

Director	Hara, Hirohisa
Professor	Sakurai, Takashi
Professor	Watanabe, Tetsuya

Associate Professor	Hara, Hirohisa
Associate Professor	Suematsu, Yoshinori
Assistant Professor	Ishikawa, Ryoko
Assistant Professor	Kano, Ryohei
Assistant Professor	Katsukawa, Yukio
Assistant Professor	Kubo, Masahito
Research Engineer	Bando, Takamasa
Senior Engineer	Kobiki, Toshihiko
Chief Engineer	Shinoda, Kazuya
Specially Appointed Research Staff	Narukage, Noriyuki
Technical Expert	Inoe, Naoko
Administrative Supporter	Fujiyoshi, Marie

Centers

Astronomy Data Center

Director	Ohishi, Masatoshi
Professor	Kokubo, Eiichiro
Professor	Mizumoto, Yoshihiko
Associate Professor	Ichikawa, Shin-ichi
Associate Professor	Kosugi, George
Associate Professor	Nomaru, Junichi
Associate Professor	Ohishi, Masatoshi
Associate Professor	Shibata, Katsunori
Associate Professor	Takata, Tadafumi
Assistant Professor	Furusawa, Hisanori
Assistant Professor	Ito, Takashi
Assistant Professor	Kano, Ryohei
Assistant Professor	Oe, Masafumi
Assistant Professor	Shimojo, Masumi
Assistant Professor	Shirasaki, Yuji
Assistant Professor	Takano, Shuro
Research Engineer	Inoe, Goki
Engineer	Fukui, Asami
Specially Appointed Research Staff	Higuchi, Yuichi
Specially Appointed Research Staff	Kawaguchi, Toshihiro
Specially Appointed Research Staff	Yoshida, Tessei
Specially Appointed Research Staff	Zapart, Christopher Andrew
Research Expert	Abe, Miki
Research Expert	Asano, Eiji
Research Expert	Furusawa, Junko
Research Expert	Isogai, Mizuki
Research Expert	Nakajima, Kimihiko
Research Expert	Nakane, Makiko
Research Expert	Tanaka, Nobuhiro
Research Supporter	Fujikawa, Makiko
Research Supporter	Noda, Sachiyo
Administrative Supporter	Aida, Kanako
Administrative Supporter	Ishii, Yuko
Research Assistant Staff	Suzuki, Taiki

JVO Project

Head	Mizumoto, Yoshihiko
Associate Professor	Ohishi, Masatoshi
Assistant Professor	Shirasaki, Yuji

Advanced Technology Center

Director	Noguchi, Takashi
Professor	Noguchi, Takashi
Professor	Takami, Hideki
Associate Professor	Hara, Hirohisa
Associate Professor	Iwata, Ikuru
Associate Professor	Matsuo, Hiroshi
Associate Professor	Miyazaki, Satoshi
Associate Professor	Sekimoto, Yutaro
Chief Research Engineer	Okada, Norio
Assistant Professor	Akutsu, Tomotada
Assistant Professor	Kano, Ryohei
Assistant Professor	Kojima, Takafumi
Assistant Professor	Nakaya, Hidehiko
Assistant Professor	Suzuki, Ryuji
Specially Appointed Assistant Professor	Gonzalez Garcia, Alvaro
Research Engineer	Fujii, Yasunori
Research Engineer	Fukushima, Mitsuhiro
Research Engineer	Iizuka, Yoshizo
Research Engineer	Noguchi, Motokazu
Research Engineer	Sato, Naohisa
Senior Engineer	Kubo, Koichi
Senior Engineer	Takahashi, Toshikazu
Chief Engineer	Fukuda, Takeo
Chief Engineer	Ikenoue, Bungo
Chief Engineer	Inata, Motoko
Chief Engineer	Ito, Tetsuya
Chief Engineer	Iwashita, Hikaru
Chief Engineer	Kamata, Yukiko
Chief Engineer	Kaneko, Keiko
Chief Engineer	Miyazawa, Chieko
Chief Engineer	Obuchi, Yoshiyuki
Chief Engineer	Tamura, Tomonori
Chief Engineer	Uraguchi, Fumihiro
Chief Engineer	Waseda, Koichi
Postdoctoral Fellow	Karatsu, Kenichi
Engineer	Mitsui, Kenji
Engineer	Tsuzuki, Toshihiro
Specially Appointed Research Staff	Dominjon, Agnes Micheline
Specially Appointed Research Staff	Narukage, Noriyuki
Research Expert	Furutani, Akio
Research Expert	Iwakuni, Mikio
Research Expert	Kamada, Chiyoshi
Research Expert	Karatsu, Miki
Research Expert	Konuma, Mika
Research Expert	Matthias, Kroug
Research Expert	Saito, Sakae
Research Expert	Soga, Tomio

Research Expert	Takahashi, Yasuo
Research Expert	Uemizu, Kazunori
Technical Supporter	Hayashi, Ritsuko
Technical Supporter	Kano, Mitchell Senei
Technical Expert	Kumagai, Kazuyoshi
Technical Expert	Nishino, Tetsuo
Administrative Supporter	Kuroda, Kyoko
Administrative Supporter	Murakami, Hiromi
Administrative Supporter	Yoshida, Taeko

Public Relations Center

Director	Fukushima, Toshio
Professor	Fukushima, Toshio
Professor	Watanabe, Junichi
Associate Professor	Agata, Hidehiko
Assistant Professor	Hiramatsu, Masaaki
Assistant Professor	Ikuta, Chisato
Assistant Professor	Soma, Mitsuru
Research Engineer	Fukushima, Hideo
Research Engineer	Katayama, Masato
Research Engineer	Oshima, Norio
Research Engineer	Sasaki, Goro
Chief Senior Engineer	Matsuda, Kou
Engineer	Nagayama, Syogo
Chief	Hori, Mayumi
Specially Appointed Senior Specialist	Cheung, Sze-Leung
Specially Appointed Senior Specialist	Lundock, Ramsey Guy
Research Expert	Komiyama, Hiroko
Research Expert	Ono, Tomoko
Research Expert	Takata, Hiroyuki
Research Expert	Usuda-Sato, Kumiko
Research Supporter	Kume, Kaori
Public Outreach Official	Baba, Yukie
Public Outreach Official	Endoh, Isao
Public Outreach Official	Fujita, Tokiko
Public Outreach Official	Futami, Hiroshi
Public Outreach Official	Hatano, Satomi
Public Outreach Official	Ishikawa, Naomi
Public Outreach Official	Ishizaki, Masaharu
Public Outreach Official	Itoh, Shoichi
Public Outreach Official	Iwashiro, Kuninori
Public Outreach Official	Koike, Akio
Public Outreach Official	Kubo, Maki
Public Outreach Official	Masuzawa, Hitoshi
Public Outreach Official	Mikami, Naotsugu
Public Outreach Official	Naito, Seiichiro
Public Outreach Official	Natsugari, Satomi
Public Outreach Official	Nemoto, Shiomi
Public Outreach Official	Oguri, Junko
Public Outreach Official	Ohgoe, Osamu
Public Outreach Official	Shibata, Yukiko
Public Outreach Official	Shioya, Yasuhisa
Public Outreach Official	Takeda, Takaaki
Public Outreach Official	Udzumaki, Tatsuya

Public Outreach Official	Watanabe, Yuriko
Administrative Supporter	Aoki, Makiko
Administrative Supporter	Noguchi, Sayumi

Public Relations Office

Head (2014 Dec.1-)	Hiramatsu, Masaaki
Head (-2014 Nov.30)	Ikuta, Chisato
Engineer	Nagayama, Syogo
Specially Appointed Senior Specialist	Lundock, Ramsey Guy
Research Expert	Komiyama, Hiroko
Research Expert	Ono, Tomoko
Research Supporter	Kume, Kaori
Public Outreach Official	Mikami, Naotsugu
Public Outreach Official	Natsugari, Satomi
Public Outreach Official	Shioya, Yasuhisa

Outreach and Education Office

Head	Agata, Hidehiko
Public Outreach Official	Fujita, Tokiko
Public Outreach Official	Hatano, Satomi
Public Outreach Official	Ishikawa, Naomi
Public Outreach Official	Ishizaki, Masaharu
Public Outreach Official	Itoh, Shoichi
Public Outreach Official	Masuzawa, Hitoshi
Public Outreach Official	Naito, Seiichiro
Public Outreach Official	Ohgoe, Osamu
Public Outreach Official	Shibata, Yukiko
Public Outreach Official	Udzumaki, Tatsuya

Museum Deliberation Office

Head	Oshima, Norio
Associate Professor	Agata, Hidehiko
Research Engineer	Sasaki, Goro
Chief Senior Engineer	Matsuda, Kou
Research Expert	Usuda-Sato, Kumiko
Public Outreach Official	Baba, Yukie
Public Outreach Official	Endoh, Isao
Public Outreach Official	Fujita, Tokiko
Public Outreach Official	Futami, Hiroshi
Public Outreach Official	Koike, Akio
Public Outreach Official	Nemoto, Shiomi
Public Outreach Official	Takeda, Takaaki
Public Outreach Official	Watanabe, Yuriko

Ephemeris Computation Office

Head	Katayama, Masato
Chief Senior Engineer	Matsuda, Kou
Public Outreach Official	Endoh, Isao

Library

Chief	Hori, Mayumi
Public Outreach Official	Kubo, Maki
Public Outreach Official	Oguri, Junko

Publications Office

Head	Fukushima, Toshio
Vice-Head	Fukushima, Hideo
Research Expert	Takata, Hiroyuki
Public Outreach Official	Iwashiro, Kuninori
Public Outreach Official	Kubo, Maki

Office for Astronomy Outreach of the IAU

Head	Agata, Hidehiko
Specially Appointed Senior Specialist	Cheung, Sze-Leung
Public Outreach Official	Shibata, Yukiko

General Affairs Office

Head	Matsuda, Kou
Administrative Supporter	Aoki, Makiko
Administrative Supporter	Noguchi, Sayumi

Divisions**Division of Optical and Infrared Astronomy**

Director	Mizumoto, Yoshihiko
Professor	Arimoto, Nobuo
Professor	Gouda, Naoteru
Professor	Iye, Masanori
Professor	Kobayashi, Yukiyasu
Professor	Mizumoto, Yoshihiko
Professor	Ohashi, Nagayoshi
Professor	Sekiguchi, Kazuhiro
Professor	Usuda, Tomonori
Professor	Yamashita, Takuya
Associate Professor	Aoki, Wakou
Associate Professor	Aso, Yoichi
Associate Professor	Hayashi, Saeko
Associate Professor	Iwata, Ikuru
Associate Professor	Izumiura, Hideyuki
Associate Professor	Kashikawa, Nobunari
Associate Professor	Kodama, Tadayuki
Associate Professor	Nomaru, Junichi
Associate Professor	Sasaki, Toshiyuki
Associate Professor	Takato, Naruhisa
Associate Professor	Takeda, Yoichi
Associate Professor	Terada, Hiroshi
Associate Professor	Ukita, Nobuharu
Chief Research Engineer	Koyano, Hisashi
Chief Research Engineer	Miyashita, Takaaki
Chief Research Engineer	Yutani, Masami
Assistant Professor	Akutsu, Tomotada
Assistant Professor	Hayano, Yutaka
Assistant Professor	Imanishi, Masatoshi
Assistant Professor	Komiyama, Yutaka
Assistant Professor	Kotani, Takayuki
Assistant Professor	Minowa, Yosuke
Assistant Professor	Morino, Junichi
Assistant Professor	Nakajima, Tadashi
Assistant Professor	Nishikawa, Jun
Assistant Professor	Okita, Hirofumi
Assistant Professor	Pyo, Tae-soo
Assistant Professor	Soma, Mitsuru
Assistant Professor	Suto, Hiroshi
Assistant Professor	Takahashi, Ryutaro
Assistant Professor	Tatsumi, Daisuke
Assistant Professor	Tomono, Daigo

Assistant Professor	Tsujimoto, Takuji
Assistant Professor	Ueda, Akitoshi
Assistant Professor	Yagi, Masafumi
Assistant Professor	Yanagisawa, Kenshi
Assistant Professor	Yano, Taihei
Specially Appointed Assistant Professor	Matsuoka, Yoshiaki
Research Engineer	Ishizaki, Hideharu
Research Engineer	Tazawa, Seiichi
Research Engineer	Torii, Yasuo
Chief Engineer	Kurakami, Tomio
Chief Engineer	Namikawa, Kazuhito
Chief Engineer	Negishi, Satoru
Chief Engineer	Omata, Koji
Chief Engineer	Tamura, Tomonori
Chief Engineer	Tanaka, Nobuyuki
Engineer	Sato, Tatsuhiro
Engineer	Tsutsui, Hironori
Administrative Supporter	Kimura, Hiroko
Research Assistant Staff	Toshikawa, Jun

Secondment (to The University of Tokyo)

Assistant Professor	Ohishi, Naoko
---------------------	---------------

Division of Radio Astronomy

Director	Iguchi, Satoru
Professor	Hasegawa, Tetsuo
Professor	Honma, Mareki
Professor	Iguchi, Satoru
Professor	Kameno, Seiji
Professor	Kawabe, Ryohei
Professor	Kobayashi, Hideyuki
Professor	Namiki, Noriyuki
Professor	Ogasawara, Ryusuke
Professor	Sakamoto, Seiichi
Professor	Tatematsu, Kenichi
Associate Professor	Asayama, Shinichiro
Associate Professor	Hanada, Hideo
Associate Professor	Iono, Daisuke
Associate Professor	Kiuchi, Hitoshi
Associate Professor	Kosugi, George
Associate Professor	Matsumoto, Koji
Associate Professor	Mizuno, Norikazu
Associate Professor	Okuda, Takeshi
Associate Professor	Saito, Masao
Associate Professor	Shibata, Katsunori
Chief Research Engineer	Iwashita, Hiroyuki
Chief Research Engineer	Kanzawa, Tomio
Chief Research Engineer	Kawashima, Susumu
Chief Research Engineer	Kikuchi, Kenichi
Chief Research Engineer	Sato, Katsuhisa
Chief Research Engineer	Tsuruta, Seiitsu
Chief Research Engineer	Watanabe, Manabu
Assistant Professor	Araki, Hiroshi
Assistant Professor	Espada Fernandez, Daniel
Assistant Professor	Ezawa, Hajime

Assistant Professor	Hagiwara, Yoshiaki
Assistant Professor	Hiramatsu, Masaaki
Assistant Professor	Hirota, Akihiko
Assistant Professor	Hirota, Tomoya
Assistant Professor	Ishizuki, Sumio
Assistant Professor	Jike, Takaaki
Assistant Professor	Kamazaki, Takeshi
Assistant Professor	Kameya, Osamu
Assistant Professor	Kono, Yusuke
Assistant Professor	Matsuda, Yuichi
Assistant Professor	Miyoshi, Makoto
Assistant Professor	Nakanishi, Kouichiro
Assistant Professor	Noda, Hiroto
Assistant Professor	Oshima, Tai
Assistant Professor	Sawada, Tsuyoshi
Assistant Professor	Sugimoto, Masahiro
Assistant Professor	Sunada, Kazuyoshi
Assistant Professor	Takahashi, Satoko
Assistant Professor	Takano, Shuro
Assistant Professor	Tamura, Yoshiaki
Assistant Professor	Umemoto, Tomofumi
Research Engineer	Asari, Kazuyoshi
Research Engineer	Ashitagawa, Kyoko
Research Engineer	Ishikawa, Toshiaki
Research Engineer	Mikoshihara, Hiroshi
Research Engineer	Nakazato, Takeshi
Research Engineer	Suzuki, Shunsaku
Senior Engineer	Kobiki, Toshihiko
Senior Engineer	Miyazawa, Kazuhiko
Senior Engineer	Nakamura, Kyoko
Chief Engineer	Handa, Kazuyuki
Chief Engineer	Kato, Yoshihiro
Chief Engineer	Miyazawa, Chieko
Engineer	Nishitani, Hiroyuki
Engineer	Shizugami, Makoto
Engineer	Ueno, Yuji
Engineer	Wada, Takuya
Research Expert	Tatsuzawa, Kaichi
Research Supporter	Okayasu, Rikako

Research Engineer	Bando, Takamasa
Senior Engineer	Shinohara, Noriyuki
Chief Engineer	Shinoda, Kazuya

Division of Theoretical Astronomy

Director	Tomisaka, Kohji
Professor	Kokubo, Eiichiro
Professor	Tomisaka, Kohji
Professor	Yoshida, Haruo
Specially Appointed Professor	Turner, Edwin Lewis
Associate Professor	Kajino, Toshitaka
Associate Professor	Nakamura, Fumitaka
Assistant Professor	Hamana, Takashi
Assistant Professor	Inoe, Tsuyoshi
Assistant Professor	Kudo, Takahiro
Assistant Professor	Tanaka, Masaomi
Specially Appointed Assistant Professor	Fujii, Michiko
Specially Appointed Assistant Professor	Fujimoto, Keizo
Specially Appointed Assistant Professor	Nozawa, Takaya
Specially Appointed Assistant Professor	Sotani, Hajime
Specially Appointed Assistant Professor	Zenitani, Seiji
Administrative Supporter	Izumi, Shioko
Administrative Supporter	Kano, Kaori
Research Assistant Staff	Kataoka, Akimasa

Division of Solar and Plasma Astrophysics

Director	Sakurai, Takashi
Professor	Sakurai, Takashi
Professor	Shibasaki, Kiyoto
Professor	Watanabe, Tetsuya
Associate Professor	Hanaoka, Yoichiro
Associate Professor	Hara, Hirohisa
Associate Professor	Sekii, Takashi
Associate Professor	Suematsu, Yoshinori
Assistant Professor	Ishikawa, Ryoko
Assistant Professor	Kano, Ryohei
Assistant Professor	Katsukawa, Yukio
Assistant Professor	Kubo, Masahito
Assistant Professor	Shimojo, Masumi
Specially Appointed Assistant Professor	Toriumi, Shin

5. Research Support Departments

Research Enhancement Strategy Office	
Director	Kobayashi, Hideyuki
Specially Appointed Senior Specialist	Chapman, Junko
Specially Appointed Senior Specialist	Chiba, Kurazo
Specially Appointed Senior Specialist	Fukui, Hideharu
Specially Appointed Senior Specialist	Hori, Kuniko
Specially Appointed Senior Specialist	Lundock, Ramsey Guy
Specially Appointed Senior Specialist	Miura, Mitsuo
Specially Appointed Senior Specialist	Ota, Masahiko
Specially Appointed Senior Specialist	Suematsu, Sayaka
Specially Appointed Senior Specialist	Yamamiya, Osamu
Research Evaluation Support Office	
Director	Watanabe, Junichi
Specially Appointed Senior Specialist	Hori, Kuniko
Office of International Relations	
Director	Sekiguchi, Kazuhiro
Professor	Sekiguchi, Kazuhiro
Research Expert	Komiyama, Hiroko
Research Expert	Yoshida, Fumi
Administration Office	
Deputy Manager/Senior Specialist	Onishi, Tomoyuki
International Academic Affairs Section	
Chief	Kikkawa, Hiroko
Administrative Supporter	Ito, Yoshihisa
Administrative Supporter	Momma, Yoko
Human Resources Planning Office	
Director	Yamamiya, Osamu
Specially Appointed Senior Specialist	Suematsu, Sayaka
Safety and Health Management Office	
Director	Takami, Hideki
Specially Appointed Senior Specialist	Ota, Masahiko
Technical Expert	Kashiwagi, Yuji
Engineering Promotion Office	
Director	Takami, Hideki
Specially Appointed Senior Specialist	Chiba, Kurazo

Administration Department	
General Manager	Sasaki, Tsuyoshi
General Affairs Division	
Manager	Harada, Eiichiro
Deputy Manager	Onishi, Tomoyuki
Information Technology Specialist	
Specialist	Yoshikawa, Ikuko
Personnel Accounting Specialist	
Specialist	Kikuchi, Jinichi
General Affairs Section	
Chief	Yoshikawa, Ikuko
Staff	Takada, Miyuki
Staff	Yamafuji, Yasuto
Staff	Yoshimura, Tetsuya
Vehicle Driver	Amemiya, Hidemi
Administrative Expert	Murakami, Sachiko
Administrative Expert	Noguchi, Koki
Administrative Supporter	Kobayashi, Kayo
Administrative Supporter	Odate, Noriko
Administrative Supporter	Seki, Kumi
Personnel Section	
Chief	Yamanochi, Mika
Staff	Isozaki, Yuka
Staff	Takai, Tetsuya
Payroll Section	
Chief	Kikuchi, Jinichi
Staff	Furukawa, Shinichiro
Specially Appointed Senior Specialist	Yamamoto, Chieko
Administrative Supporter	Aiba, Narukazu
Employee Section	
Chief	Yamaura, Mari
Staff	Kawashima, Ryota
Research Support Section	
Chief	Sato, Yoko
Staff	Matsukura, Koji
Staff	Okubo, Kazuhiko
Administrative Supporter	Aka, Shizuno
Administrative Supporter	Okuda, Yutaka
Administrative Supporter	Takeuchi, Kaori
Administrative Supporter	Torii, Makiko
Child Care Leave	
Staff	Goto, Michiru
Staff	Ouchi, Kaori
Financial Affairs Division	
Manager	Nemoto, Nobuyuki
Senior Specialist	Miura, Norio
External Funding Specialist	
Specialist	Miura, Susumu
Audit Specialist	
Specialist	Yamamoto, Shinichi
Administrative Supporter	Amano, Hiroshi
Administrative Supporter	Kawano, Chie

Administrative Supporter	Sato, Chieko
Administrative Supporter	Shioyama, Erika
Administrative Supporter	Urushibata, Kozue
Administrative Supporter	Yasuda, Masako
General Affairs Section	
Chief	Miura, Susumu
Staff	Mizokawa, Yuko
Administrative Supporter	Kono, Midori
Administrative Supporter	Okada, Kazuko
Budget Section	
Chief	Fujiwara, Kenichi
Staff	Katou, Masahiro
Staff	Yokota, Banri
Administrative Supporter	Matsubara, Michiko
Asset Management Section	
Chief	Miura, Norio
Senior Staff	Sato, Kanako
Purchase Validation Center	
Senior Staff	Sato, Kanako
Administrative Supporter	Nakagomi, Kimitoshi
Administrative Supporter	Nishimura, Misako
Administrative Supporter	Taniai, Tomoko
Administrative Supporter	Tanigaki, Yukio
Accounting Division	
Manager	Hyuga, Tadayuki
Contract Specialist	
Specialist	Chiba, Yoko
Accounting Section	
Chief	Sukigara, Yuji
Senior Staff	Chiba, Satoko
Administrative Supporter	Kobayashi, Rina
Administrative Supporter	Nagasawa, Fumi
Administrative Supporter	Okada, Junko
Procurement Section	
Chief	Chiba, Yoko
Staff	Kayamori, Shinji
Staff	Sakamoto, Misato
Staff	Sugimoto, Naomi
Administrative Expert	Sato, Masako
Administrative Supporter	Murai, Chikako
Administrative Supporter	Takano, Ayako
Administrative Supporter	Uchida, Shimako
Facilities Division	
Manager	Ono, Kazuo
Administrative Expert	Asada, Tsuneaki
General Affairs Section	
Chief	Yamada, Tomohiro
Staff	Nakagawa, Yukie
Administrative Supporter	Hasegawa, Chisato
Planning Section	
Chief	Murakami, Kazuhiro
Administrative Supporter	Tsukamoto, Izumi

Maintenance Section	
Chief	Sato, Takashi
Staff	Hayashigura, Koji

6. Personnel change

Research and Academic Staff

Date	Name	Change	New Affiliated Institute, Position	Previous Affiliated Institute, Position
2014/4/1	Namiki, Noriyuki	Hired	Division of Radio Astronomy (RISE Project), Professor	(Chiba Institute of Technology)
2014/4/1	Aso, Yoichi	Hired	Division of Optical and Infrared Astronomy (Gravitational Wave Project Office), Associate Professor	(The University of Tokyo)
2014/4/1	Kikuchi, Kenichi	Hired	Division of Radio Astronomy (NAOJ Chile Observatory), Chief Research Engineer	
2014/4/1	Okita, Hirofumi	Hired	Division of Optical and Infrared Astronomy (Subaru Telescope), Assistant Professor	
2014/6/1	Ishikawa, Ryoko	Hired	Division of Solar and Plasma Astrophysics (Hinode Science Center), Assistant Professor	(Hinode Science Center, Specially Appointed Assistant Professor)
2014/8/1	Sakamoto, Seiichi	Hired	Division of Radio Astronomy (NAOJ Chile Observatory), Professor	(Japan Aerospace Exploration Agency)
2014/8/1	Kotani, Takayuki	Hired	Division of Optical and Infrared Astronomy (Extrasolar Planet Detection Project Office), Assistant Professor	
2014/11/30	Ikuta, Chisato	Resigned	(Japan Aerospace Exploration Agency)	Public Relations Center, Assistant Professor
2014/12/31	Tomono, Daigo	Resigned		Division of Optical and Infrared Astronomy (Subaru Telescope), Assistant Professor
2015/3/31	Kudoh, Takahiro	Resigned	(Nagasaki University)	Division of Theoretical Astronomy, Assistant Professor
2015/3/31	Hagiwara, Yoshiaki	Resigned	(Toyo University)	Division of Radio Astronomy (Mizusawa VLBI Observatory), Assistant Professor
2015/3/31	Takano, Shuro	Resigned	(Nihon University)	Division of Radio Astronomy (Nobeyama Radio Observatory), Assistant Professor
2015/3/31	Fukushima, Hideo	Resigned		Public Relations Center, Research Engineer
2015/3/31	Iye, Masanori	Retired		Division of Optical and Infrared Astronomy (TMT Project Office), Professor
2015/3/31	Shibasaki, Kiyoto	Retired		Division of Solar and Plasma Astrophysics (Nobeyama Solar Radio Observatory), Professor
2015/3/31	Sasaki, Toshiyuki	Retired		Division of Optical and Infrared Astronomy, Associate Professor
2015/3/31	Yutani, Masami	Retired		Division of Optical and Infrared Astronomy (Subaru Telescope), Chief Research Engineer
2015/3/31	Koyano, Hisashi	Retired		Division of Optical and Infrared Astronomy (Okayama Astrophysical Observatory), Chief Research Engineer
2015/3/31	Oshima, Norio	Contract Expired		Public Relations Center, Research Engineer

2014/10/1	Iwashita, Hiroyuki	Promoted	Division of Radio Astronomy (Nobeyama Radio Observatory), Chief Research Engineer	Division of Radio Astronomy (Nobeyama Radio Observatory), Research Engineer
2015/3/1	Honma, Mareki	Promoted	Division of Radio Astronomy (Mizusawa VLBI Observatory), Professor	Division of Radio Astronomy (Mizusawa VLBI Observatory), Associate Professor

Engineering Staff

Date	Name	Change	New Affiliated Institute, Position	Previous Affiliated Institute, Position
2014/4/1	Sato, Tatsuhiro	Hired	Division of Optical and Infrared Astronomy (Subaru Telescope), Engineer	
2015/3/1	Nishitani, Hiroyuki	Hired	Division of Radio Astronomy (Nobeyama Radio Observatory), Engineer	

2014/8/1	Shinohara, Noriyuki	Promoted	Division of Solar and Plasma Astrophysics (Nobeyama Solar Radio Observatory), Senior Engineer	Division of Solar and Plasma Astrophysics (Nobeyama Solar Radio Observatory), Chief Engineer
2014/8/1	Kubo, Koichi	Promoted	Advanced Technology Center, Senior Engineer	Advanced Technology Center, Chief Engineer
2014/8/1	Kobiki, Toshihiko	Promoted	Division of Radio Astronomy (NAOJ Chile Observatory), Senior Engineer	Division of Radio Astronomy (NAOJ Chile Observatory), Chief Engineer
2014/8/1	Takahashi, Toshikazu	Promoted	Advanced Technology Center, Senior Engineer	Advanced Technology Center, Chief Engineer
2014/8/1	Nakamura, Kyoko	Promoted	Division of Radio Astronomy (NAOJ Chile Observatory), Senior Engineer	Division of Radio Astronomy (NAOJ Chile Observatory), Chief Engineer
2014/9/1	Matsuda, Kou	Promoted	Public Relations Center, Chief Senior Engineer	Public Relations Center, Senior Engineer

Administrative Staff

Date	Name	Change	New Affiliated Institute, Position	Previous Affiliated Institute, Position
2014/4/1	Sasaki, Tsuyoshi	Hired	Administration Department, General Manager	(Iwate University)
2014/4/1	Harada, Eiichiro	Hired	Administration Department General Affairs Division, Manager	(National Institutes for the Humanities)
2014/4/1	Nemoto, Nobuyuki	Hired	Administration Department Financial Affairs Division, Manager	(Ministry of Education, Culture, Sports, Science and Technology)
2014/4/1	Sukigara, Yuji	Hired	Administration Department Accounting Division Accounting Section, Chief	(Tokyo Gakugei University)
2014/4/1	Hayashigura, Koji	Hired	Administration Department Facilities Division Maintenance Section, Staff	(The University of Tokyo)
2014/8/1	Shimizu, Hidetoshi	Hired	Nobeyama Radio Observatory Administration Office Accounting Section, Chief	(Shinshu University)
2014/8/1	Isozaki, Yuka	Hired	Administration Department General Affairs Division Personnel Section, Staff	
2014/8/1	Kayamori, Shinji	Hired	Administration Department Accounting Division Procurement Section, Staff	
2015/2/1	Yokota, Banri	Hired	Administration Department Financial Affairs Division Budget Section, Staff	
2015/3/1	Takai, Tetsuya	Hired	Administration Department General Affairs Division Personnel Section, Staff	

2014/7/31	Sasaki, Hiroaki	Resigned	(Shinshu University)	Nobeyama Radio Observatory Administration Office Accounting Section, Chief
2014/7/31	Kobayashi, Hideki	Resigned	(Kochi University)	Subaru Telescope Administration Department, Administrative Manager
2014/12/15	Kato, Masahiro	Resigned		Administration Department Financial Affairs Division Budget Section, Staff
2015/3/31	Kikuchi, Jinichi	Resigned	(The University of Tokyo)	Administration Department General Affairs Division, Specialist
2015/3/31	Miura, Susumu	Resigned	(Tokyo Gakugei University)	Administration Department Financial Affairs Division General Affairs Section, Chief
2015/3/31	Hori, Mayumi	Resigned	(The University of Tokyo)	Public Relations Center, Library Section, Chief
2015/3/31	Okubo, Kazuhiko	Resigned	(The Graduate University for Advanced Studies)	Administration Department General Affairs Division Research Support Section, Staff

2015/3/31	Hyuga, Tadayuki	Retired		
2015/3/31	Ono, Kazuo	Retired		

2014/8/1	Seto, Yoji	Promoted	Subaru Telescope Administration Department, Administrative Manager	Office of International Relations Administration Office, Chief
2014/8/1	Onishi, Tomoyuki	Promoted	Administration Department General Affairs Division, Deputy Manager	Administration Department Accounting Division, Specialist
2014/8/1	Chiba, Yoko	Promoted	Administration Department Accounting Division Procurement Section, Chief	Administration Department Accounting Division Procurement Section, Senior Staff
2014/8/1	Yamamoto, Shinichi	Promoted	Administration Department Financial Affairs Division, Specialist	NAOJ Chile Observatory Administration Department Financial Section, Senior Staff
2014/10/1	Chiba, Satoko	Promoted	Administration Department Accounting Division Accounting Section, Senior Staff	Administration Department Accounting Division Accounting Section, Staff

Employee on Annual Salary System

Date	Name	Change	New Affiliated Institute, Position	Previous Affiliated Institute, Position
2014/4/1	Kawamura, Akiko	Hired	NAOJ Chile Observatory, Specially Appointed Associate Professor	
2014/4/1	Chibueze, James Okwe	Hired	NAOJ Chile Observatory, Specially Appointed Assistant Professor	(NAOJ Chile Observatory, Specially Appointed Research Staff)
2014/4/1	Gonzalez Garcia, Alvaro	Hired	Advanced Technology Center, Specially Appointed Assistant Professor	
2014/4/1	Toriumi, Shin	Hired	Division of Solar and Plasma Astrophysics, Specially Appointed Assistant Professor	
2014/4/1	Nozawa, Takaya	Hired	Division of Theoretical Astronomy, Specially Appointed Assistant Professor	
2014/4/1	Tadaki, Kenichi	Hired	Subaru Telescope, Specially Appointed Research Staff	
2014/4/1	Higuchi, Yuichi	Hired	Astronomy Data Center, Specially Appointed Research Staff	
2014/4/1	Zapart, Christopher Andrew	Hired	Astronomy Data Center, Specially Appointed Research Staff	

2014/4/1	Harakawa, Hiroki	Hired	TMT Project Office, Specially Appointed Research Staff	
2014/4/1	Nishimura, Atsushi	Hired	Nobeyama Radio Observatory, Specially Appointed Research Staff	
2014/4/1	Furusawa, Shun	Hired	Center for Computational Astrophysics, Specially Appointed Research Staff	
2014/4/1	Shirahata, Mai	Hired	JASMINE Project Office, Specially Appointed Research Staff	
2014/4/1	Cheung, Sze Leung	Hired	Public Relations Center, Specially Appointed Senior Specialist	
2014/4/1	Shimoda, Takanobu	Hired	NAOJ Chile Observatory, Specially Appointed Senior Specialist	
2014/4/1	Kobayashi, Tsuyoshi	Hired	NAOJ Chile Observatory, Specially Appointed Senior Specialist	
2014/4/1	Morita, Eisuke	Hired	NAOJ Chile Observatory, Specially Appointed Senior Specialist	
2014/4/1	Sugimoto, Kanako	Hired	NAOJ Chile Observatory, Specially Appointed Senior Specialist	
2014/4/1	Kawasaki, Wataru	Hired	NAOJ Chile Observatory, Specially Appointed Senior Specialist	
2014/4/1	Matsui, Takayuki	Hired	NAOJ Chile Observatory, Specially Appointed Senior Specialist	
2014/4/1	Yamada, Masumi	Hired	NAOJ Chile Observatory, Specially Appointed Senior Specialist	
2014/5/1	Sugiyama, Motokuni	Hired	TMT Project Office, Specially Appointed Senior Specialist	
2014/5/1	Kawashima, Tomohisa	Hired	Center for Computational Astrophysics, Specially Appointed Research Staff	
2014/5/1	Kawaguchi, Toshihiro	Hired	Astronomy Data Center, Specially Appointed Research Staff	
2014/5/19	Wu, Yuanwei	Hired	Mizusawa VLBI Observatory, Specially Appointed Research Staff	
2014/6/1	Zeidler, Simon	Hired	Gravitational Wave Project Office, Specially Appointed Research Staff	
2014/7/1	Sotani, Hajime	Hired	Division of Theoretical Astronomy, Specially Appointed Assistant Professor	
2014/7/15	Omiya, Masashi	Hired	Extrasolar Planet Detection Project Office, Specially Appointed Research Staff	
2014/9/1	Sanhueza Nunez, Patricio Andres	Hired	NAOJ Chile Observatory, Specially Appointed Research Staff	
2014/9/1	Barton, Mark Andrew	Hired	Gravitational Wave Project Office, Specially Appointed Research Staff	
2014/10/1	Minamidani, Tetsuhiro	Hired	Nobeyama Radio Observatory, Specially Appointed Assistant Professor	(Nobeyama Radio Observatory, Specially Appointed Research Staff)
2014/10/1	Yamada, Ryuhei	Hired	RISE Project, Specially Appointed Research Staff	
2014/10/1	Tazaki, Fumie	Hired	Mizusawa VLBI Observatory, Specially Appointed Research Staff	
2014/10/1	Kuniyoshi, Masaya	Hired	NAOJ Chile Observatory, Specially Appointed Senior Specialist	
2014/10/1	Zang, Liangjian	Hired	NAOJ Chile Observatory, Specially Appointed Senior Specialist	
2014/11/1	Ueda, Junko	Hired	NAOJ Chile Observatory, Specially Appointed Research Staff	
2014/11/1	Hirata, Naoatsu	Hired	Gravitational Wave Project Office, Specially Appointed Senior Specialist	

2014/11/1	Nagai, Hiroshi	Hired	NAOJ Chile Observatory, Specially Appointed Associate Professor	(NAOJ Chile Observatory, Specially Appointed Assistant Professor)
2015/1/1	Yamamoto, Chieko	Hired	Administration Department General Affairs Division, Specially Appointed Senior Specialist	
2015/2/1	Saito, Motoi	Hired	NAOJ Chile Observatory, Specially Appointed Senior Specialist	

2014/5/31	Ishikawa, Ryoko	Resigned	(Division of Solar and Plasma Astrophysics (Hinode Science Center), Assistant Professor)	Hinode Science Center, Specially Appointed Assistant Professor
2014/7/31	Takiwaki, Tomoya	Resigned		Center for Computational Astrophysics, Specially Appointed Assistant Professor
2014/8/31	Komugi, Shinya	Resigned		NAOJ Chile Observatory, Specially Appointed Associate Professor
2014/9/30	Tadaki, Kenichi	Resigned		Subaru Telescope, Specially Appointed Research Staff
2014/9/30	Minamidani, Tetsuhiro	Resigned	(Nobeyama Radio Observatory, Specially Appointed Assistant Professor)	Nobeyama Radio Observatory, Specially Appointed Research Staff
2014/10/31	Nagai, Hiroshi	Resigned	(NAOJ Chile Observatory, Specially Appointed Associate Professor)	NAOJ Chile Observatory, Specially Appointed Assistant Professor
2014/11/30	Shinnaga, Hiroko	Resigned	(Kagoshima University)	NAOJ Chile Observatory, Specially Appointed Associate Professor
2015/1/31	Chibueze, James Okwe	Resigned		NAOJ Chile Observatory, Specially Appointed Assistant Professor
2015/3/31	Miura, Rie	Resigned	(NAOJ Chile Observatory, Specially Appointed Assistant Professor)	NAOJ Chile Observatory, Specially Appointed Research Staff
2015/3/31	Herrera Contreras, Cinthya Natalia	Resigned	(NAOJ Chile Observatory, Specially Appointed Assistant Professor)	NAOJ Chile Observatory, Specially Appointed Research Staff
2015/3/31	Kawaguchi, Toshihiro	Resigned		Astronomy Data Center, Specially Appointed Research Staff

2015/3/31	Kandori, Ryo	Contract Expired		Extrasolar Planet Detection Project Office, Specially Appointed Research Staff
2015/3/31	Nagayama, Takumi	Contract Expired	(Mizusawa VLBI Observatory, Specially Appointed Senior Specialist)	Mizusawa VLBI Observatory, Specially Appointed Research Staff
2015/3/31	Yamaguchi, Takahiro	Contract Expired	(Office of International Relations, Specially Appointed Senior Specialist)	NAOJ Chile Observatory Administration Department, Specially Appointed Senior Specialist

Research Administrator Staff

Date	Name	Change	New Affiliated Institute, Position	Previous Affiliated Institute, Position
2014/4/1	Chapman, Junko	Hired	Research Enhancement Strategy Office, TMT Project Office, Specially Appointed Senior Specialist	
2014/4/1	Hori, Kuniko	Hired	Research Enhancement Strategy Office, Research Evaluation Support Office, Specially Appointed Senior Specialist	
2014/4/1	Lundock, Ramsey Guy	Hired	Research Enhancement Strategy Office, Public Relations Center, Specially Appointed Senior Specialist	
2014/4/1	Chiba, Kurazo	Hired	Research Enhancement Strategy Office, Engineering Promotion Office, Specially Appointed Senior Specialist	

2014/4/1	Fukui, Hideharu	Hired	Research Enhancement Strategy Office, NAOJ Chile Observatory, Specially Appointed Senior Specialist	
2014/10/1	Miura, Mitsuo	Hired	Research Enhancement Strategy Office, Mizusawa VLBI Observatory, Specially Appointed Senior Specialist	
2014/9/30	Suematsu, Sayaka	Resigned		Research Enhancement Strategy Office, Human Resources Planning Office, Specially Appointed Senior Specialist

Foreign Visiting Researcher

Name	Period	Affiliated Institute
Kuhn, Jeffrey Richard	2014/5/27 ~ 2014/6/20 2014/9/11 ~ 2014/9/20	University of Hawaii (U.S.A)
Ojha, Devendra Kumar	2014/6/9 ~ 2014/7/8	Tata Institute of Fundamental Research (India)
Turner, Edwin Lewis	2014/9/4 ~ 2014/10/31 2015/2/5 ~ 2015/3/5	Princeton University (U.S.A)
Uitenbroek, Han	2014/4/7 ~ 2014/5/16	National Solar Observatory (U.S.A)
Barsuglia, Matteo	2014/5/19 ~ 2014/6/30	Centre National de la Recherche Scientifique (France)
Packham, Christopher Charles	2014/6/4 ~ 2014/8/13	The University of Texas at San Antonio, UTSA (U.S.A)

In the Research and Academic Staff personnel list, we only listed reassignments from Engineering Staff.

In the Engineering Staff and Administrative Staff personnel lists, we only listed reassignments from/to other NINS organizations.

7. Advisory Committee for Research and Management

Members

From universities and related institutes

Kajita, Takaaki	The University of Tokyo
○ Kusano, Kanya	Nagoya University
Momose, Munetake	Ibaraki University
Murakami, Izumi	National Institute for Fusion Science
Nakagawa, Takao	Japan Aerospace Exploration Agency
Ohta, Kouji	Kyoto University
Okumura, Sachiko	Japan Women's University
Sugita, Seiji	The University of Tokyo
Umemura, Masayuki	University of Tsukuba
Yamada, Toru	Tohoku University

From NAOJ

Arimoto, Nobuo	Subaru Telescope
Gouda, Naoteru	JASMINE Project Office
Hasegawa, Tetsuo	NAOJ Chile Observatory
Kobayashi, Hideyuki	Mizusawa VLBI Observatory
Noguchi, Takashi	Advanced Technology Center
Sakurai, Takashi	Solar Observatory
Takami, Hideki	Advanced Technology Center
Tomisaka, Kohji	Division of Theoretical Astronomy
Usuda, Tomonori	TMT Project Office
● Watanabe, Junichi	Public Relations Center

● Chairperson ○ Vice-Chairperson
Period: April 1, 2014 – March 31, 2016

8. Professors Emeriti and Staffs Emeriti

Professor Emeritus (NAOJ)

Kakuta, Chuichi
Hiei, Eijiro
Yamashita, Yasumasa
Nishimura, Shiro
Kozai, Yoshihide
Hirayama, Tadashi
Miyamoto, Masanori
Nariai, Kyouji
Okamoto, Isao
Nakano, Takenori
Kodaira, Keiichi
Yokoyama, Koichi
Oe, Masatsugu
Kinoshita, Hiroshi
Nishimura, Tetsuo
Kaifu, Norio
Ishiguro, Masato
Inoue, Makoto
Kawano, Nobuyuki
Andou, Hiroyasu
Karoji, Hiroshi
Chikada, Yoshihiro
Noguchi, Kunio
Fujimoto, Masakatsu
Manabe, Seiji
Miyama, Shoken
Kawaguchi, Noriyuki

Professor Emeritus (Tokyo Astronomical Observatory)

Akabane, Kenji
Moriyama, Fumio
Kozai, Yoshihide