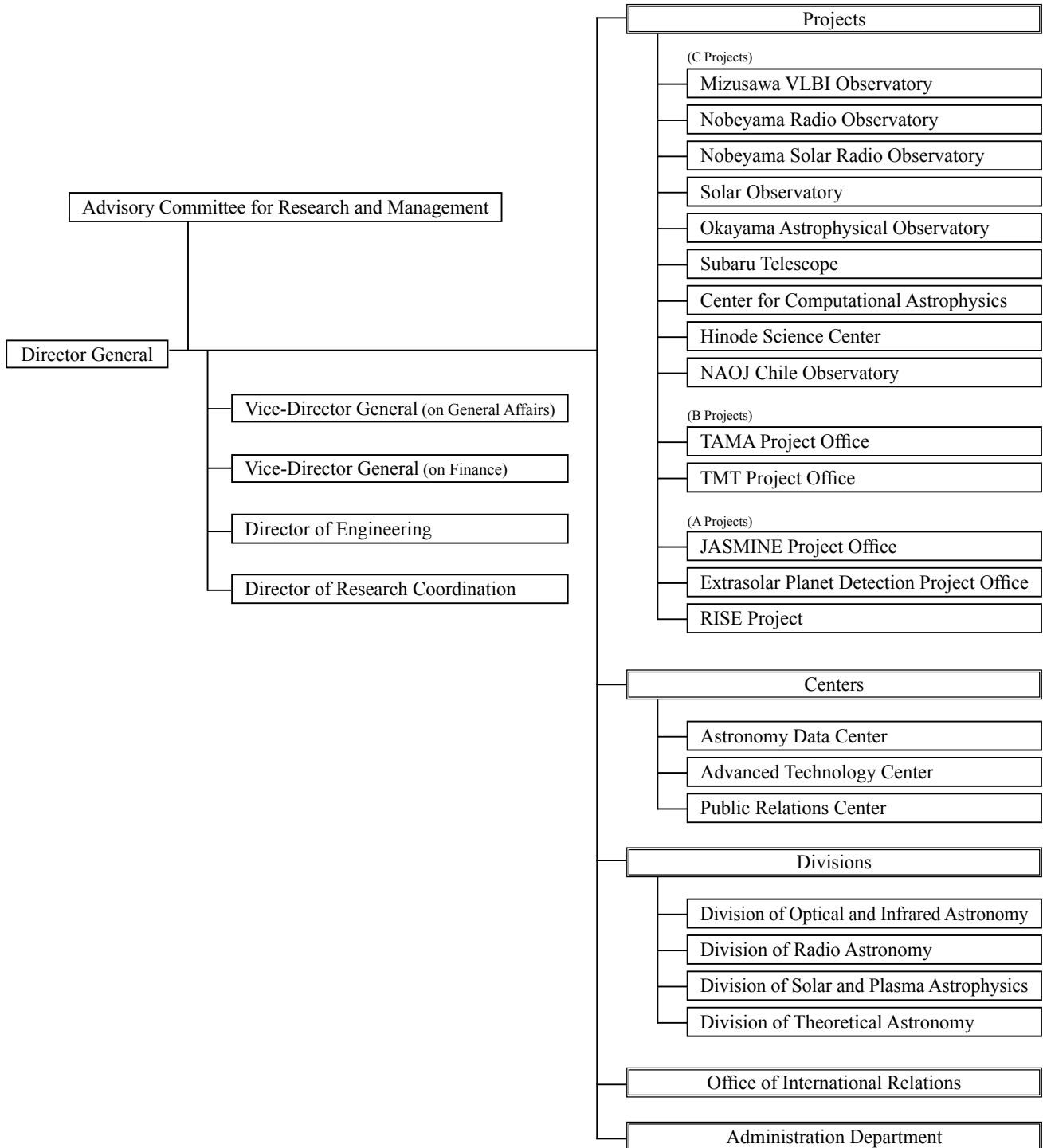


IV Organization and Management

1. Organization



2. Advisory Committee for Research and Management

Members

From universities and related institutes

Umemura, Masayuki	University of Tsukuba
Ohta, Kouji	Kyoto University
Onishi, Toshikazu	Osaka Prefecture University
Okumura, Sachiko	Japan Women's University
Kajita, Takaaki	The University of Tokyo
○ Kusano, Kanya	Nagoya University
Nakagawa, Takao	Japan Aerospace Exploration Agency
Nagahara, Hiroko	The University of Tokyo
Matsumoto, Ryoji	Chiba University
Yamada, Toru	Tohoku University

From NAOJ

Arimoto, Nobuo	Subaru Telescope
Iye, Masanori	TMT Project Office
Kawaguchi, Noriyuki	Mizusawa VLBI Observatory
Gouda, Naoteru	JASMINE Project Office
Kobayashi, Hideyuki	Mizusawa VLBI Observatory
Sakurai, Takashi	Solar Observatory
Takami, Hideki	TMT Project Office
Tsuneta, Saku	Hinode Science Center
Tomisaka, Kohji	Division of Theoretical Astronomy
Hasegawa, Tetsuo	NAOJ Chile Observatory
● Watanabe, Junichi	Public Relations Center

● Chairperson ○ Vice-Chairperson

Period: April 1, 2012 - March 31, 2014

3. Staff

Number of Regular Employees

(2013/3/31)

Director General	1
Professors	29
Associate Professors	38
Chief Research Engineers	11
Assistant Professors	62
Research Engineers	20
Others	95
Total	256

Director General	Hayashi, Masahiko
Vice-Director General	
on General Affairs	Watanabe, Junichi
on Finance	Kobayashi, Hideyuki
Director of Engineering	Takami, Hideki
Director of Research Coordination	Sakurai, Takashi
Professor Emeritus (NAOJ)	
	Kakuta, Chuichi
	Hiei, Eijiro
	Yamashita, Yasumasa
	Nishimura, Shiro
	Kozai, Yoshihide
	Hirayama, Tadashi
	Miyamoto, Masanori
	Nariai, Kyouji
	Okamoto, Isao
	Nakano, Takenori
	Kodaira, Keiichi
	Yokoyama, Koichi
	Oe, Masatsugu
	Kinoshita, Hiroshi
	Nishimura, Tetsuo
	Kaifu, Norio
	Ishiguro, Masato
	Inoue, Makoto
	Kawano, Nobuyuki
	Andou, Hiroyasu
	Karoji, Hiroshi
	Chikada, Yoshihiro
	Noguchi, Kunio
	Fujimoto, Masakatsu
	Manabe, Seiji
	Miyama, Shoken
Professor Emeritus (Tokyo Astronomical Observatory)	
	Takase, Bunshiro
	Akabane, Kenji
	Moriyama, Fumio
	Kozai, Yoshihide
Staff Emeritus (International Latitude Observatory of Mizusawa)	
	Hosoyama, Kennosuke
Administration Department	
General Manager	Sato, Tadashi
General Affairs Division	
Manager	Goto, Tsutomu
Deputy Manager	Naito, Akihiko
General Affairs Section	
Staff	Sugimoto, Naomi
Staff	Yamafuji, Yasuto
Vehicle Driver	Amemiya, Hidemi
Personnel Section	
Chief	Goto, Tsutomu
Senior Staff	Chiba, Yoko
Staff	Iida, Naoto
Staff	Furukawa, Shinichiro

Employee Section	
Chief	Goto, Tsutomu
Staff	Kawashima, Ryota
Staff	Sato, Kanako
Research Support Section	
Chief	Yamaura, Mari
Staff	Yoshimura, Tetsuya
Child Care Leave	
Staff	Goto, Michiru
Staff	Sakuma, Kaori
Financial Affairs Division	
Manager	Yamaguchi, Yutaka
Senior Specialist	Miura, Norio
Audit Specialist	
Specialist	Yamanochi, Mika
External Funding Specialist	
Staff	Ushio, Maiko
General Affairs Section	
Chief	Yamanochi, Mika
Budget Section	
Chief	Fujiwara, Kenichi
Staff	Hiramatsu, Naoya
Asset Management Section	
Chief	Yamada, Tomohiro
Purchase Validation Center	
Chief	Yamada, Tomohiro
Child Care Leave	
Staff	Mizokawa, Yuko
Accounting Division	
Manager	Hyuga, Tadayuki
Contract Specialist	
Specialist	Onishi, Tomoyuki
Accounting Section	
Chief	Kamezawa, Takayuki
Staff	Chiba, Satoko
Procurement Section	
Chief	Onishi, Tomoyuki
Staff	Okubo, Kazuhiko
Staff	Sugawara, Satoshi
Facilities Division	
Manager	Asada, Tsuneaki
General Affairs Section	
Chief	Miura, Susumu
Staff	Nakagawa, Yuki
Planning Section	
Chief	Murakami, Kazuhiro
Maintenance Section	
Chief	Yasuda, Masanori
Staff	Shibata, Jumpei
Office of International Relations	
Director	Sekiguchi, Kazuhiro
Professor	Sekiguchi, Kazuhiro
Administration Office	
Chief	Naito, Akihiko
International Academic Affairs Section	

Chief Kikkawa, Hiroko

Executive Manager, Human Resources

Specially Appointed Yamamiya, Osamu
Senior Specialist

Mizusawa VLBI Observatory

Director Kawaguchi, Noriyuki
Professor Kawaguchi, Noriyuki
Professor Kobayashi, Hideyuki
Associate Professor Agata, Hidehiko
Associate Professor Shibata, Katsunori
Associate Professor Hanada, Hideo
Associate Professor Honma, Mareki
Chief Research Engineer Satou, Katsuhisa
Chief Research Engineer Miyaji, Takeshi
Assistant Professor Kameya, Osamu
Assistant Professor Kouno, Yusuke
Assistant Professor Jike, Takaaki
Assistant Professor Sunada, Kazuyoshi
Assistant Professor Tamura, Yoshiaki
Assistant Professor Hagiwara, Yoshiaki
Assistant Professor Hirota, Tomoya
Research Engineer Asari, Kazuyoshi
Research Engineer Ishikawa, Toshiaki
Research Engineer Oshima, Norio
Research Engineer Suzuki, Syunsaku
Research Engineer Fukushima, Hideo
Engineer Ueno, Yuji
Engineer Shizugami, Makoto

Administration Office

General Affairs Section
Chief Shirakaba, Mikio
Accounting Section
Chief Koseki, Tatsuya
Staff Kato, Masahiro

Ishigakijima Astronomical Observatory

Director Hayashi, Masahiko
Vice-Director Miyaji, Takeshi
Associate Professor Agata, Hidehiko
Research Engineer Oshima, Norio
Research Engineer Fukushima, Hideo

Time Keeping Office

Director Kawaguchi, Noriyuki
Chief Research Engineer Satou, Katsuhisa
Research Engineer Asari, Kazuyoshi

Nobeyama Radio Observatory

Director Kuno, Nario
Professor Kawabe, Ryohei
Associate Professor Kuno, Nario
Associate Professor Nakamura, Fumitaka
Chief Research Engineer Kanzawa, Tomio
Assistant Professor Ishizuki, Sumio
Assistant Professor Umemoto, Tomofumi
Assistant Professor Oshima, Tai

Assistant Professor Takano, Shuro
Research Engineer Iwashita, Hiroyuki
Research Engineer Mikoshiba, Hiroshi
Senior Engineer Ishikawa, Shinichi
Senior Engineer Miyazawa, Kazuhiko
Chief Engineer Handa, Kazuyuki
Chief Engineer Miyazawa, Chieko
Engineer Wada, Takuya

Administration Office

General Affairs Section
Chief Otsuka, Tomoyoshi
Accounting Section
Chief Sasaki, Hiroaki
Staff Takahashi, Masaru

Nobeyama Solar Radio Observatory

Director Hanaoka, Yoichiro
Professor Shibasaki, Kiyoto
Chief Research Engineer Kawashima, Susumu
Assistant Professor Shimajo, Masumi
Chief Engineer Shinohara, Noriyuki

Solar Observatory

Director Hanaoka, Yoichiro
Professor Sakurai, Takashi
Professor Shibasaki, Kiyoto
Associate Professor Suematsu, Yoshinori
Associate Professor Hanaoka, Yoichiro
Chief Engineer Kobiki, Toshihiko
Chief Engineer Shinoda, Kazuya
Chief Engineer Tanaka, Nobuyuki

Okayama Astrophysical Observatory

Director Izumiura, Hideyuki
Associate Professor Izumiura, Hideyuki
Associate Professor Ukita, Nobuharu
Chief Research Engineer Okita, Kiichi
Chief Research Engineer Koyano, Hisashi
Assistant Professor Yanagisawa, Kenshi
Research Engineer Sakamoto, Akihiro

Administration Office

Administration Section
Chief Izumiura, Hideyuki

Subaru Telescope

Director Arimoto, Nobuo
Professor Arimoto, Nobuo
Professor Iye, Masanori
Professor Ohashi, Nagayoshi
Professor Mizumoto, Yoshihiko
Associate Professor Ichikawa, Shinichi
Associate Professor Usuda, Tomonori
Associate Professor Kashikawa, Nobunari
Associate Professor Kodama, Tadayuki
Associate Professor Takato, Naruhisa
Associate Professor Takeda, Yoichi

Associate Professor	Noumaru, Junichi
Associate Professor	Hayashi, Saeko
Chief Research Engineer	Yutani, Masami
Assistant Professor	Imanishi, Masatoshi
Assistant Professor	Iwata, Ikuru
Assistant Professor	Komiyama, Yutaka
Assistant Professor	Shirasaki, Yuji
Assistant Professor	Terada, Hiroshi
Assistant Professor	Tomono, Daigo
Assistant Professor	Hayano, Yutaka
Assistant Professor	Minowa, Yosuke
Chief Engineer	Omata, Koji
Chief Engineer	Kurakami, Tomio
Chief Engineer	Tazawa, Seiichi
Chief Engineer	Namikawa, Kazuhito
Chief Engineer	Negishi, Satoru

Administration Department

Manager	Kobayashi, Hideki
General Affairs Section	
Chief	Sato, Yoko
Accounting Section	
Chief	Furuhata, Tomoyuki

Hyper Suprime-Cam

Director	Miyazaki, Satoshi
Associate Professor	Takata, Tadafumi
Assistant Professor	Komiyama, Yutaka
Assistant Professor	Nakaya, Hidehiko
Assistant Professor	Furusawa, Hisanori
Chief Engineer	Uraguchi, Fumihiro
Chief Engineer	Kamata, Yukiko

Center for Computational Astrophysics

Acting Director	Kokubo, Eiichiro
Professor	Kokubo, Eiichiro
Professor	Tomisaka, Koji
Associate Professor	Nakamura, Fumitaka
Assistant Professor	Ito, Takashi
Assistant Professor	Ohsuga, Ken
Assistant Professor	Kudoh, Takahiro
Assistant Professor	Kotake, Kei
Assistant Professor	Tanaka, Masaomi
Specially Appointed	Takahashi, Hiroyuki
Assistant Professor	
Specially Appointed	Takiwaki, Tomoya
Assistant Professor	
Specially Appointed	Takeda, Takaaki
Assistant Professor	

Hinode Science Center

Director	Tsuneta, Saku
Professor	Sakurai, Takashi
Professor	Shibasaki, Kiyoto
Professor	Tsuneta, Saku
Professor	Watanabe, Tetsuya
Associate Professor	Suematsu, Yoshinori
Associate Professor	Sekii, Takashi

Associate Professor	Hara, Hirohisa
Assistant Professor	Katsukawa, Yukio
Assistant Professor	Kano, Ryohei
Assistant Professor	Kubo, Masahito
Assistant Professor	Shimojo, Masumi
Research Engineer	Bando, Takamasa
Chief Engineer	Kobiki, Toshihiko

SOLAR-C Project Office

Director	Hara, Hirohisa
Professor	Sakurai, Takashi
Professor	Shibasaki, Kiyoto
Professor	Tsuneta, Saku
Professor	Watanabe, Tetsuya
Associate Professor	Suematsu, Yoshinori
Assistant Professor	Katsukawa, Yukio
Assistant Professor	Kano, Ryohei
Assistant Professor	Kubo, Masahito
Assistant Professor	Shimojo, Masumi
Research Engineer	Bando, Takamasa
Chief Engineer	Kobiki, Toshihiko
Chief Engineer	Shinoda, Kazuya

NAOJ Chile Observatory

Director	Hasegawa, Tetsuo
Professor	Iguchi, Satoru
Professor	Inatani, Junji
Professor	Ogasawara, Ryusuke
Professor	Kameno, Seiji
Professor	Kawabe, Ryohei
Professor	Tatematsu, Kenichi
Professor	Hasegawa, Tetsuo
Associate Professor	Iono, Daisuke
Associate Professor	Oishi, Masatoshi
Associate Professor	Okuda, Takeshi
Associate Professor	Kiuchi, Hitoshi
Associate Professor	Kuno, Nario
Associate Professor	Kosugi, Joji
Associate Professor	Saito, Masao
Associate Professor	Mizuno, Norikazu
Chief Research Engineer	Kawashima, Susumu
Chief Research Engineer	Watanabe, Manabu
Assistant Professor	Asayama, Shinichiro
Assistant Professor	Ezawa, Hajime
Assistant Professor	Oshima, Tai
Assistant Professor	Kamazaki, Takeshi
Assistant Professor	Komugi, Shinya
Assistant Professor	Sawada, Tsuyoshi
Assistant Professor	Shimojo, Masumi
Assistant Professor	Sugimoto, Masahiro
Assistant Professor	Tachihara, Kengo
Assistant Professor	Nakanishi, Koichiro
Assistant Professor	Hiramatsu, Masaaki
Assistant Professor	Matsuda, Yuichi
Research Engineer	Ashitagawa, Kyoko
Chief Engineer	Kato, Yoshihiro
Chief Engineer	Kobiki, Toshihiko

Chief Engineer	Nakamura, Kyoko
Specially Appointed	Chiba, Kurazou
Senior Specialist	
Administration Department	
Manager	Yamaguchi, Takahiro
Chief	Tsukano, Satomi
Senior Staff	Yamamoto, Shinichi

TAMA Project Office

Acting Director	Ando, Masaki
Associate Professor	Ando, Masaki
Assistant Professor	Akutsu, Tomotada
Assistant Professor	Ueda, Akitoshi
Assistant Professor	Tatsumi, Daisuke
Research Engineer	Ishizaki, Hideharu
Research Engineer	Torii, Yasuo
Chief Engineer	Tanaka, Nobuyuki

Secondment (to The University of Tokyo)

Assistant Professor	Takahashi, Ryutarou
Assistant Professor	Oishi, Naoko

JASMINE Project Office

Director	Gouda, Naoteru
Professor	Gouda, Naoteru
Professor	Kobayashi, Yukiyasu
Associate Professor	Takato, Naruhisa
Associate Professor	Hanada, Hideo
Assistant Professor	Araki, Hiroshi
Assistant Professor	Tsujimoto, Takuji
Assistant Professor	Nakajima, Tadashi
Assistant Professor	Noda, Hiroto
Assistant Professor	Yano, Taihei
Chief Research Engineer	Tsuruta, Seiitsu
Research Engineer	Asari, Kazuyoshi

TMT Project Office

Director	Iye, Masanori
Professor	Iye, Masanori
Professor	Takami, Hideki
Professor	Yamashita, Takuya
Associate Professor	Aoki, Wakou
Associate Professor	Usuda, Tomonori
Associate Professor	Kashikawa, Nobunari
Associate Professor	Kodama, Tadayuki
Associate Professor	Takato, Naruhisa
Chief Research Engineer	Miyashita, Takaaki
Assistant Professor	Imanishi, Masatoshi
Assistant Professor	Suzuki, Ryuji
Specially Appointed	Kozu, Akihito
Senior Specialist	

Extrasolar Planet Detection Project Office

Director	Tamura, Motohide
Professor	Kokubo, Eiichiro
Professor	Sasaki, Sho
Associate Professor	Izumiura, Hideyuki

Associate Professor	Tamura, Motohide
Assistant Professor	Suto, Hiroshi
Assistant Professor	Nakajima, Tadashi
Assistant Professor	Nishikawa, Jun
Assistant Professor	Morino, Jun-ichi
Specially Appointed	Narita, Norio
Assistant Professor	

RISE Project

Director	Sasaki, Sho
Professor	Kawaguchi, Noriyuki
Professor	Gouda, Naoteru
Professor	Kokubo, Eiichiro
Professor	Kobayashi, Yukiyasu
Professor	Sasaki, Sho
Associate Professor	Hanada, Hideo
Associate Professor	Matsumoto, Koji
Chief Research Engineer	Tsuruta, Seiitsu
Assistant Professor	Araki, Hiroshi
Assistant Professor	Kouno, Yusuke
Assistant Professor	Tsujimoto, Takuji
Assistant Professor	Noda, Hiroto
Assistant Professor	Yano, Taihei
Research Engineer	Asari, Kazuyoshi
Research Engineer	Ishikawa, Toshiaki
Chief Engineer	Tazawa, Seiichi

Astronomy Data Center

Director	Oishi, Masatoshi
Professor	Mizumoto, Yoshihiko
Professor	Kokubo, Eiichiro
Associate Professor	Oishi, Masatoshi
Associate Professor	Ichikawa, Shinich
Associate Professor	Kosugi, Joji
Associate Professor	Shibata, Katsunori
Associate Professor	Takata, Tadafumi
Associate Professor	Noumaru, Junichi
Assistant Professor	Ito, Takashi
Assistant Professor	Oe, Masafumi
Assistant Professor	Katsukawa, Yukio
Assistant Professor	Shimojo, Masumi
Assistant Professor	Shirasaki, Yuji
Assistant Professor	Takano, Syuro
Assistant Professor	Furusawa, Hisanori
Research Engineer	Inoue, Goki
Engineer	Fukui, Asami

JVO Project

Director	Mizumoto, Yoshihiko
Associate Professor	Oishi, Masatoshi
Assistant Professor	Shirasaki, Yuji

Advanced Technology Center

Director	Tsuneta, Saku
Professor	Noguchi, Takashi
Associate Professor	Ando, Masaki
Associate Professor	Uzawa, Yoshinori

Associate Professor	Sekimoto, Yutaro
Associate Professor	Hara, Hirohisa
Associate Professor	Matsuo, Hiroshi
Associate Professor	Miyazaki, Satoshi
Chief Research Engineer	Okada, Norio
Assistant Professor	Akutsu, Tomotada
Assistant Professor	Iwata, Ikuru
Assistant Professor	Kano, Ryohei
Assistant Professor	Kojima, Takafumi
Assistant Professor	Suzuki, Ryuji
Assistant Professor	Nakaya, Hidehiko
Research Engineer	Iizuka, Yoshizo
Research Engineer	Sato, Naohisa
Research Engineer	Noguchi, Motokazu
Research Engineer	Fukushima, Mitsuhiro
Research Engineer	Fujii, Yasunori
Research Engineer	Mikoshihira, Hiroshi
Chief Engineer	Ikenoue, Bungo
Chief Engineer	Ito, Tetsuya
Chief Engineer	Inata, Motoko
Chief Engineer	Iwashita, Hikaru
Chief Engineer	Uraguchi, Fumihiro
Chief Engineer	Obuchi, Yoshiyuki
Chief Engineer	Kaneko, Keiko
Chief Engineer	Kamata, Yukiko
Chief Engineer	Kubo, Koichi
Chief Engineer	Takahashi, Toshikazu
Chief Engineer	Tamura, Tomonori
Chief Engineer	Fukuda, Takeo
Chief Engineer	Miyazawa, Chieko
Chief Engineer	Waseda, Koichi
Engineer	Tsuzuki, Toshihiro
Engineer	Mitsui, Kenji

Public Relations Center

Director	Fukushima, Toshio
Professor	Fukushima, Toshio
Professor	Watanabe, Junichi
Associate Professor	Agata, Hidehiko
Assistant Professor	Ikuta, Chisato
Assistant Professor	Soma, Mitsuru
Research Engineer	Oshima, Norio
Research Engineer	Katayama, Masato
Research Engineer	Sasaki, Goro
Research Engineer	Fukushima, Hideo
Senior Engineer	Matsuda, Kou
Engineer	Nagayama, Shiyogo
Specially Appointed Senior Specialist	Reed, Sarah Jane
Chief	Hori, Mayumi

Public Relations Office

Head	Ikuta, Chisato
Assistant Professor	Soma, Mitsuru
Specially Appointed Senior Specialist	Reed, Sarah Jane

Outreach Office · Archive Office

Head	Agata, Hidehiko
Vice-Head	Oshima, Norio
Research Engineer	Sasaki, Goro
Senior Engineer	Matsuda, Kou

Ephemeris Computation Office

Head	Katayama, Masato
Senior Engineer	Matsuda, Kou

Science Culture Promotion Unit

Head	Agata, Hidehiko
------	-----------------

Library

Chief	Hori, Mayumi
-------	--------------

Publications Office

Head	Fukushima, Toshio
Vice-Head	Fukushima, Hideo

Administration Office

Head	Matsuda, Kou
------	--------------

Division of Optical and Infrared Astronomy

Director	Mizumoto, Yoshihiko
Professor	Arimoto, Nobuo
Professor	Iye, Masanori
Professor	Ohashi, Nagayoshi
Professor	Gouda, Naoteru
Professor	Kobayashi, Yukiyasu
Professor	Sekiguchi, Kazuhiro
Professor	Takami, Hideki
Professor	Mizumoto, Yoshihiko
Professor	Yamashita, Takuya
Associate Professor	Aoki, Wakou
Associate Professor	Ando, Masaki
Associate Professor	Izumiyama, Hideyuki
Associate Professor	Ukita, Nobuharu
Associate Professor	Usuda, Tomonori
Associate Professor	Kashikawa, Nobunari
Associate Professor	Kodama, Tadayuki
Associate Professor	Sasaki, Toshiyuki
Associate Professor	Takato, Naruhisa
Associate Professor	Takeda, Yoichi
Associate Professor	Tamura, Motohide
Associate Professor	Noumaru, Junichi
Associate Professor	Hayashi, Saeko
Chief Research Engineer	Okita, Kiichi
Chief Research Engineer	Koyano, Hisashi
Chief Research Engineer	Miyashita, Takaaki
Chief Research Engineer	Yutani, Masami
Assistant Professor	Akutsu, Tomotada
Assistant Professor	Imanishi, Masatoshi
Assistant Professor	Iwata, Ikuru
Assistant Professor	Ueda, Akitoshi
Assistant Professor	Komiyama, Yutaka
Assistant Professor	Suto, Hiroshi
Assistant Professor	Soma, Mitsuru
Assistant Professor	Tatsumi, Daisuke
Assistant Professor	Tsujimoto, Takuji
Assistant Professor	Terada, Hiroshi
Assistant Professor	Tomono, Daigo

Assistant Professor	Nakajima, Tadashi
Assistant Professor	Nishikawa, Jun
Assistant Professor	Hayano, Yutaka
Assistant Professor	Minowa, Yosuke
Assistant Professor	Morino, Jun-ichi
Assistant Professor	Yagi, Masafumi
Assistant Professor	Yanagisawa, Kenshi
Assistant Professor	Yano, Taihei
Specially Appointed	Narita, Norio
Assistant Professor	
Research Engineer	Ishizaki, Hideharu
Research Engineer	Sakamoto, Akihiro
Research Engineer	Torii, Yasuo
Chief Engineer	Omata, Koji
Chief Engineer	Kurakami, Tomio
Chief Engineer	Tazawa, Seiichi
Chief Engineer	Tanaka, Nobuyuki
Chief Engineer	Namikawa, Kazuhito
Chief Engineer	Negishi, Satoru

Secondment (to The University of Tokyo)

Assistant Professor	Takahashi, Ryutaro
Assistant Professor	Oishi, Naoko

Division of Radio Astronomy

Director	Iguchi, Satoru
Professor	Iguchi, Satoru
Professor	Inatani, Junji
Professor	Ogasawara, Ryusuke
Professor	Kameno, Seiji
Professor	Kawaguchi, Noriyuki
Professor	Kawabe, Ryohei
Professor	Kobayashi, Hideyuki
Professor	Sasaki, Sho
Professor	Tatematsu, Kenichi
Professor	Hasegawa, Tetsuo
Associate Professor	Iono, Daisuke
Associate Professor	Okumura, Sachiko
Associate Professor	Kiuchi, Hitoshi
Associate Professor	Kuno, Nario
Associate Professor	Kosugi, Joji
Associate Professor	Saito, Masao
Associate Professor	Shibata, Katsunori
Associate Professor	Hanada, Hideo
Associate Professor	Honma, Mareki
Associate Professor	Matsumoto, Koji
Associate Professor	Mizuno, Norikazu
Chief Research Engineer	Kawashima, Susumu
Chief Research Engineer	Kanzawa, Tomio
Chief Research Engineer	Satou, Katsuhisa
Chief Research Engineer	Tsuruta, Seiitsu
Chief Research Engineer	Miyaji, Takeshi
Chief Research Engineer	Watanabe, Manabu
Assistant Professor	Asayama, Shinichiro
Assistant Professor	Araki, Hiroshi
Assistant Professor	Ishizuki, Sumio
Assistant Professor	Umemoto, Tomofumi

Assistant Professor	Ezawa, Hajime
Assistant Professor	Oshima, Tai
Assistant Professor	Kamazaki, Takeshi
Assistant Professor	Kameya, Osamu
Assistant Professor	Kouno, Yusuke
Assistant Professor	Komugi, Shinya
Assistant Professor	Sawada, Tsuyoshi
Assistant Professor	Jike, Takaaki
Assistant Professor	Sugimoto, Masahiro
Assistant Professor	Sunada, Kazuyoshi
Assistant Professor	Takano, Shuro
Assistant Professor	Tachihara, Kengo
Assistant Professor	Tamura, Yoshiaki
Assistant Professor	Nakanishi, Koichiro
Assistant Professor	Noda, Hiroto
Assistant Professor	Hagiwara, Yoshiaki
Assistant Professor	Hiramatsu, Masaaki
Assistant Professor	Hirota, Tomoya
Assistant Professor	Matsuda, Yuichi
Assistant Professor	Miyoshi, Makoto
Research Engineer	Asari, Kazuyoshi
Research Engineer	Ashitagawa, Kyoko
Research Engineer	Ishikawa, Toshiaki
Research Engineer	Iwashita, Hiroyuki
Research Engineer	Suzuki, Syunsaku
Senior Engineer	Ishikawa, Shinichi
Senior Engineer	Miyazawa, Kazuhiko
Chief Engineer	Kato, Yoshihiro
Chief Engineer	Nakamura, Kyoko
Chief Engineer	Handa, Kazuyuki
Chief Engineer	Miyazawa, Chieko
Engineer	Ueno, Yuji
Engineer	Shizugami, Makoto
Engineer	Wada, Takuya

Division of Solar and Plasma Astrophysics

Director	Watanabe, Tetsuya
Professor	Sakurai, Takashi
Professor	Shibasaki, Kiyoto
Professor	Tsuneta, Saku
Professor	Watanabe, Tetsuya
Associate Professor	Suematsu, Yoshinori
Associate Professor	Sekii, Takashi
Associate Professor	Hanaoka, Yoichiro
Associate Professor	Hara, Hirohisa
Assistant Professor	Katsukawa, Yukio
Assistant Professor	Kano, Ryohei
Assistant Professor	Kubo, Masahito
Assistant Professor	Shimojo, Masumi
Research Engineer	Bando, Takamasa
Chief Engineer	Kobiki, Toshihiko
Chief Engineer	Shinoda, Kazuya
Chief Engineer	Shinohara, Noriyuki

Division of Theoretical Astronomy

Director	Tomisaka, Koji
----------	----------------

Professor Kokubo, Eiichiro
 Professor Tomisaka, Koji
 Professor Yoshida, Haruo
 Associate Professor Kajino, Toshitaka
 Associate Professor Nakamura, Fumitaka
 Assistant Professor Ohsuga, Ken
 Assistant Professor Kudoh, Takahiro

Assistant Professor Kotake, Kei
 Assistant Professor Tanaka, Masaomi
 Assistant Professor Hamana, Takashi
 Specially Appointed Zenitani, Seiji
 Assistant Professor
 Specially Appointed Fujimoto, Keizo
 Assistant Professor

Personnel Change

Research and Academic Staff

Date	Name	Change	New Affiliated Institute, Position	Previous Affiliated Institute, Position
2012/4/1	Hayashi, Masahiko	Appointed	Director General	The University of Tokyo

2012/5/21	Matsuda, Yuichi	Hired	Division of Radio Astronomy (NAOJ Chile Observatory), Assistant Professor	California Institute of Technology
2012/6/1	Ando, Masaki	Hired	Division of Optical and Infrared Astronomy (TAMA Project Office), Associate Professor	Kyoto University
2012/9/1	Kojima, Takafumi	Hired	Advanced Technology Center, Assistant Professor	
2012/11/1	Miyashita, Takaaki	Hired	Division of Optical and Infrared Astronomy (TMT Project Office), Chief Research Engineer	
2013/1/1	Minowa, Yosuke	Hired	Division of Optical and Infrared Astronomy (Subaru Telescope), Assistant Professor	RCUH
2013/3/1	Kameno, Seiji	Hired	Division of Radio Astronomy (NAOJ Chile Observatory), Professor	Kagoshima University
2013/3/1	Okuda, Takeshi	Hired	Division of Radio Astronomy (NAOJ Chile Observatory), Associate Professor	Nagoya University

2012/4/1	Kokubo, Eiichiro	Promoted	Division of Theoretical Astronomy, Professor	Division of Theoretical Astronomy, Associate Professor
2012/4/1	Koyano, Hisashi	Promoted	Division of Optical and Infrared Astronomy, Chief Research Engineer	Division of Optical and Infrared Astronomy, Research Engineer
2012/4/1	Tsuruta, Seiitsu	Promoted	Division of Radio Astronomy, Chief Research Engineer	Division of Radio Astronomy, Research Engineer
2012/7/1	Saito, Masao	Promoted	Division of Radio Astronomy (NAOJ Chile Observatory), Associate Professor	Division of Radio Astronomy (NAOJ Chile Observatory), Assistant Professor
2012/10/18	Iguchi, Satoru	Promoted	Division of Radio Astronomy (NAOJ Chile Observatory), Professor	Division of Radio Astronomy (NAOJ Chile Observatory), Associate Professor
2012/10/18	Iono, Daisuke	Promoted	Division of Radio Astronomy (NAOJ Chile Observatory), Associate Professor	Division of Radio Astronomy (NAOJ Chile Observatory), Assistant Professor
2012/10/18	Aoki, Wakou	Promoted	Division of Optical and Infrared Astronomy (TMT Project Office), Associate Professor	Division of Optical and Infrared Astronomy (Subaru Telescope), Assistant Professor

2012/4/1	Inoue, Goki	Reassigned	Astronomy Data Center, Research Engineer	Astronomy Data Center, Chief Engineer
2012/4/1	Sato, Naohisa	Reassigned	Advanced Technology Center, Research Engineer	Advanced Technology Center, Chief Engineer
2012/4/1	Fujii, Yasunori	Reassigned	Advanced Technology Center, Research Engineer	Advanced Technology Center, Chief Engineer

2012/5/7	Morita, Koichiro	Resigned		Division of Radio Astronomy (NAOJ Chile Observatory), Professor
2013/3/31	Tsuneta, Saku	Resigned	Institute of Space and Astronautical Science	Division of Solar and Plasma Astrophysics, Professor
2013/3/31	Sasaki, Sho	Resigned	Osaka University	Division of Radio Astronomy, Professor
2013/3/31	Tamura, Motohide	Resigned	The University of Tokyo	Division of Optical and Infrared Astronomy, Associate Professor
2013/3/31	Ando, Masaki	Resigned	The University of Tokyo	Division of Optical and Infrared Astronomy, Associate Professor
2013/3/31	Kotake, Kei	Resigned	Fukuoka University	Division of Theoretical Astronomy, Assistant Professor
2013/3/31	Tachihara, Kengo	Resigned	Nagoya University	Division of Radio Astronomy, Assistant Professor

2013/3/31	Inatani, Junji	Retired		Division of Radio Astronomy, Professor
2013/3/31	Okita, Kiichi	Retired		Division of Optical and Infrared Astronomy, Chief Research Engineer
2013/3/31	Miyaji, Takeshi	Retired		Division of Radio Astronomy, Chief Research Engineer

Engineering Staff

Date	Name	Change	New Affiliated Institute, Position	Previous Affiliated Institute, Position
2012/8/1	Shizugami, Makoto	Hired	Division of Radio Astronomy (Mizusawa VLBI Observatory), Engineer	Mizusawa VLBI Observatory, Technical Expert
2012/10/1	Fukui, Asami	Hired	Astronomy Data Center, Engineer	
2013/2/1	Tsuzuki, Toshihiro	Hired	Advanced Technology Center, Engineer	

2012/9/1	Kaneko, Keiko	Promoted	Advanced Technology Center, Chief Engineer	Advanced Technology Center, Engineer
----------	---------------	----------	--	--------------------------------------

Administrative Staff

Date	Name	Change	New Affiliated Institute, Position	Previous Affiliated Institute, Position
2012/4/1	Sato, Tadashi	Hired	Administration Department, General Manager	Hitotsubashi University
2012/4/1	Miura, Norio	Hired	Administration Department Financial Affairs Division, External Funding Specialist, Senior Specialist	The University of Tokyo
2012/4/1	Koseki, Tatsuya	Hired	Mizusawa VLBI Observatory Accounting Section, Chief	Iwate University
2012/8/1	Sasaki, Hiroaki	Hired	Nobeyama Radio Observatory Accounting Section, Chief	Shinshu University
2012/9/1	Ushio, Maiko	Hired	Administration Department Financial Affairs Division, Staff	

2012/4/1	Sato, Takashi	Promoted	Okayama Astrophysical Observatory Administration Section, Chief	Administration Department General Affairs Division General Affairs Section, Senior Staff
2012/8/1	Yamaura, Mari	Promoted	Administration Department General Affairs Division Research Support Section, Chief	Administration Department General Affairs Division Research Support Section, Senior Staff
2012/8/1	Sato, Yoko	Promoted	Subaru Telescope Administration Department General Affairs Section, Chief	Subaru Telescope Administration Department General Affairs Section, Senior Staff

2012/8/1	Tsukano, Satomi	Promoted	NAOJ Chile Observatory Administration Department Administration Section, Chief	Administration Department Accounting Division Procurement Section, Senior Staff
2012/8/1	Yamamoto, Shinichi	Promoted	NAOJ Chile Observatory Administration Department Administration Section, Senior Staff	NAOJ Chile Observatory Administration Department, Staff
2012/9/1	Masuda, Akio	Reassigned	National Institutes of Natural Sciences	Mizusawa VLBI Observatory Accounting Section, Staff
2012/4/24	Mizushima, Satoru	Resigned		Administration Department Accounting Division Procurement Section, Chief
2013/1/7	Sato, Takashi	Resigned		Okayama Astrophysical Observatory Administration Section, Chief
2013/1/31	Kawai, Tomio	Resigned		Administration Department General Affairs Division, Deputy Manager
2012/7/31	Kobayashi, Hideyuki	Resigned	Shinshu University	Nobeyama Radio Observatory Accounting Section, Chief
2013/3/31	Yasuda, Masanori	Resigned	The University of Tokyo	Administration Department Facilities Division Maintenance Section, Chief
2013/3/31	Shirakaba, Mikio	Resigned	Iwate University	Mizusawa VLBI Observatory General Affairs Section, Chief
2013/3/31	Asada, Tsuneaki	Retired		Administration Department Facilities Division, Manager
2013/3/31	Naito, Akihiko	Retired		Office of International Relations Administration Office, Chief

Employee on Annual Salary System

Date	Name	Change	New Affiliated Institute, Position	Previous Affiliated Institute, Position
2012/4/1	Chiba, Kurazou	Hired	NAOJ Chile Observatory, Specially Appointed Senior Specialist	Division of Radio Astronomy, Chief Research Engineer
2012/4/1	Yamaguchi, Takahiro	Hired	NAOJ Chile Observatory, Specially Appointed Senior Specialist	
2012/4/1	Zenitani, Seiji	Hired	Division of Theoretical Astronomy, Specially Appointed Assistant Professor	
2012/4/1	Narita, Norio	Hired	Division of Optical and Infrared Astronomy (Extrasolar Planet Detection Project Office), Specially Appointed Assistant Professor	
2012/4/1	Fujimoto, Keizo	Hired	Division of Theoretical Astronomy, Specially Appointed Assistant Professor	RIKEN
2012/4/1	Takahashi, Hiroyuki	Hired	Division of Theoretical Astronomy (Center for Computational Astrophysics), Specially Appointed Assistant Professor	
2012/4/1	Takiwaki, Tomoya	Hired	Division of Theoretical Astronomy (Center for Computational Astrophysics), Specially Appointed Assistant Professor	
2012/4/1	Takeda, Takaaki	Hired	Division of Theoretical Astronomy (Center for Computational Astrophysics), Specially Appointed Assistant Professor	
2012/5/1	Kozu, Akihito	Hired	TMT Project Office, Specially Appointed Senior Specialist	

2012/9/18	Reed, Sarah Jane	Hired	Public Relations Center, Specially Appointed Senior Specialist	
2012/10/1	Yamamiya, Osamu	Hired	Specially Appointed Senior Specialist (Executive Manager, Human Resources)	

2013/3/31	Takeda, Takaaki	Contract Expired		Division of Theoretical Astronomy (Center for Computational Astrophysics), Specially Appointed Assistant Professor
-----------	-----------------	------------------	--	--

In the Research and Academic Staff personnel change list, "Reassigned" is used only for reassignments from Engineering Staff. In the Engineering Staff and Administrative Staff personnel change list, "Reassigned" is used only for reassignments from/to other NINS organizations.

Visiting Professors / Visiting Associate Professors / Visiting Research Fellows (Domestic)

Period: April 1, 2012 - March 31, 2013

No.	Affiliated Institute	Position at NAOJ	Name	Host Project / Center / Division
1	Japan Aerospace Exploration Agency	Visiting Professor	Sakamoto, Seiichi	NAOJ Chile Observatory
2	Osaka Prefecture University	Visiting Professor	Onishi, Toshikazu	NAOJ Chile Observatory
3	Ibaraki University	Visiting Professor	Momose, Munetake	NAOJ Chile Observatory
4	Yamaguchi University	Visiting Professor	Fujisawa, Kenta	Mizusawa VLBI Observatory
5	Kobe University	Visiting Professor	Hayashi, Yoshi-yuki	Astronomy Data Center / Center for Computational Astrophysics
6	Nihon University	Visiting Professor	Suzuki, Toshio	Division of Theoretical Astronomy
7	Keio University	Visiting Associate Professor	Oka, Tomoharu	NAOJ Chile Observatory
8	University of Aizu	Visiting Associate Professor	Hirata, Naru	RISE Project
9	Nagoya University	Visiting Associate Professor	Masuda, Satoshi	Nobeyama Solar Radio Observatory
10	Ibaraki University	Visiting Associate Professor	Yonekura, Yoshinori	Mizusawa VLBI Observatory
11	Japan Aerospace Exploration Agency	Visiting Associate Professor	Iwata, Takahiro	RISE Project
12	Kyoto University	Visiting Research Fellow	Nomura, Hideko	Division of Theoretical Astronomy
13	Hokkaido University	Visiting Associate Professor	Sorai, Kazuo	Mizusawa VLBI Observatory
14	Hiroshima University	Visiting Research Fellow	Kato, Tsunehiko	Center for Computational Astrophysics

Foreign Visiting Researchers

Period: April 1, 2012 - March 31, 2013

No.	Name	Period	Affiliated Institute
1	Barkin, Yury	2012.05.16~2012.11.15	Moscow State University
2	Famiano, Michael Andrew	2012.05.16~2013.01.05	Western Michigan University
3	Rai Choudhuri, Arnab	2012.05.24~2012.06.29	Indian Institute of Science
4	Judge, Philip Gordon	2012.07.01~2012.08.28	National Center for Atmospheric Research

4. Commissioned Graduate Students / Research Fellows etc.

Commissioned Graduate Students

Doctoral Course	Affiliated Institute	Period	Supervisor
Takekoshi, Tatsuya	Hokkaido University	2012/4/1~2012/6/30	Kawabe, Ryohei
Oya, Masahito	Nihon University	2012/4/1~2013/3/31	Tamura, Motohide
Horie, Masaaki	Nihon University	2012/4/1~2013/3/31	Tamura, Motohide
Takahashi, Yasuhiro	The University of Tokyo	2012/4/1~2013/3/31	Tamura, Motohide
Fukushi, Hinako	The University of Tokyo	2012/4/1~2012/9/30	Arimoto, Nobuo
Akashi, Toshiya	Tokyo Institute of Technology	2012/4/1~2013/3/31	Nakamura, Fumitaka
Nitta, Tomu	University of Tsukuba	2012/4/1~2013/3/31	Sekimoto, Yutaro
Kuroiwa, Koichi	Osaka Prefecture University	2012/4/1~2013/3/31	Uzawa, Yoshinori
Nomura, Mariko	Ochanomizu University	2012/10/1~2013/3/31	Tomisaka, Koji

Master's Course	Affiliated Institute	Period	Supervisor
Dogasaki, Chisei	Meisei University	2012/4/1~2013/3/31	Tamura, Motohide
Ui, Takahiro	Hiroshima University	2012/4/1~2013/3/31	Yamashita, Takuya
Takemura, Shinji	Gifu University	2012/4/1~2013/3/31	Kawaguchi, Noriyuki
Kobayashi, Takuji	Tokyo University of Agriculture and Technology	2012/4/1~2013/3/31	Tamura, Motohide
Toyoda, Atsushi	Gifu University	2012/4/1~2013/3/31	Kawaguchi, Noriyuki
Gondo, Rina	Ochanomizu University	2012/7/1~2013/3/31	Ando, Masaki

JSPS (Japan Society for the Promotion of Science) Foreign Research Fellows

Name	Program	Period	Host Researcher
------	---------	--------	-----------------

None

JSPS (Japan Society for the Promotion of Science) Postdoctoral Research Fellows

Name	Host Researcher
Ishioka, Ryoko	Sekiguchi, Kazuhiro
Ishikawa, Ryoko	Hara, Hirohisa
Koyama, Yusei	Arimoto, Nobuo
Hori, Yasunori	Kokubo, Eiichiro
Ishikawa, Shinnosuke	Tsuneta, Saku
Utsumi, Yosuke	Miyazaki, Satoshi

5. Budget

Expenses (FY 2012)

	(Unit: ¥1,000)
Employee Personnel Expenses	3,081,890
Operating Expenses	8,026,102
Subsidy Expenses	40,707
Industry-Academia Research Expenses and Donation Expenses	409,934
Facilities Maintenance Expenses	209,284
Total	11,767,917

KAKENHI (Grants-in-Aid for Scientific Research) for FY 2012

KAKENHI (Series of Single-year Grants)

Research categories	Number of Selected Projects	Budget (Unit: ¥1,000)		
		Total	Direct Funding	Indirect Funding
Scientific Research on Innovative Areas (Research in a proposed research area)	6	200,460	154,200	46,260
Scientific Research (S)	2	137,020	105,400	31,620
Scientific Research (A)	10	148,850	114,500	34,350
Scientific Research (B)	5	35,100	27,000	8,100
Scientific Research (C)	3	2,860	2,200	660
Specially Promoted Research	1	182,780	140,600	42,180
Young Scientists (B)	2	1,820	1,400	420
JSPS Fellows	6	5,100	5,100	0
Research Activity start-up	2	2,990	2,300	690
Total	37	716,980	552,700	164,280

KAKENHI (Multi-year Fund)

Research categories	Number of Selected Projects	Budget (Unit: ¥1,000)		
		Total	Direct Funding	Indirect Funding
Scientific Research (C)	10	13,351	10,270	3,081
Challenging Exploratory Research	3	6,760	5,200	1,560
Young Scientists (B)	9	11,570	8,900	2,670
Total	22	31,681	24,370	7,311

KAKENHI (Partial Multi-year Fund)

Research categories	Number of Selected Projects	Budget (Series of Single-year Grants) (Unit: ¥1,000)			Budget (Multi-year Fund) (Unit: ¥1,000)		
		Total	Direct Funding	Indirect Funding	Total	Direct Funding	Indirect Funding
Scientific Research (B)	2	10,270	7,900	2,370	8,840	6,800	2,040
Young Scientists (A)	1	6,630	5,100	1,530	4,940	3,800	1,140
Total	3	16,900	13,000	3,900	13,780	10,600	3,180

6. Open Use

Type	Project / Center	Category	Number of Accepted Proposals	Total Number of Researchers	Notes
Open Use at Project / Center	Okayama Astrophysical Observatory	188cm Reflector Telescope (Project Program)	1	27	1 Institute
		188cm Reflector Telescope (Normal Program)	19	114 (2)	9 Institutes 1 Country
		188cm Reflector Telescope (Student Program)	0	0	0
	Subaru Telescope		87	373 (38)	45 Institute 10 Countries
	Solar Observatory		*1	*1	*1
	Nobeyama Radio Observatory	45-m telescope (General Proposal)	32	187 (36)	41 Institutes, 10 Countries
		45-m telescope (Education Program)	1	4	2 Institutes
		45-m telescope (Short Program)	9	47 (3)	13 Institutes 1 Country
		45-m telescope (Back-up Program)	1	9	4 Institutes
	Nobeyama Solar Radio Observatory		32	131 (93)	39 Institutes 13 Countries
	Mizusawa VLBI Observatory	VERA	6	43 (17)	15 Institutes 6 Countries
	Astronomy Data Center		122	122	23 Institutes, Total amount of requested data 10,514 GB
	Center for Computational Astrophysics		172	172	
	Hinode Science Center		95	95 (24)	43 Institutes 11 Countries
	Advanced Technology Center	Facility Use	26	111 (1)	53 Institutes
		Joint Research and Development	8	72	23 Institutes
NAOJ Chile Observatory	ALMA	113	1034 (908)	180 Institutes 29 Countries	
	ASTE	11	72	15 Institutes	
Joint Development Research		9		8 Institutes	
Joint Research		3		3 Institutes	
Research Assembly		16		9 Institutes	

The number of foreign researchers shown in brackets () is included in the total.

Notes show the number of institutes and foreign countries represented by the proposal PIs. The country count does not include Japan.

*1 The observation data is open to the public on the web. No application is needed to use the data.

7. Activities at the Graduate University for Advanced Studies and other Graduate Course Education

(1) Department of Astronomical Science, School of Physical Sciences, the Graduate University for Advanced Studies

The Graduate University for Advanced Studies was established as an independent graduate university without undergraduate courses via partnerships with inter-university research institutes for the sake of advancing graduate education.

There used to be four schools – Cultural and Social Studies, Mathematical and Physical Sciences, Life Science, and Advanced Sciences before the reorganization of the School of Mathematical and Physical Sciences into the schools of Physical Sciences, High Energy Accelerator Science, and Multidisciplinary Sciences in April 2004. Now the total of six schools are offering doctoral education and research opportunities.

NAOJ has been accepting three-year doctoral course students since FY 1992 and five-year students since FY 2006 for the Department of Astronomical Science at the School of Physical Sciences. (The School of Mathematical and Physical Sciences was reorganized into the School of Physical Sciences in April 2004.)

1. Objective of the Department of Astronomical Science

The Department of Astronomical Science aims to train students, through observational, theoretical or instrument development research in astronomy or in related field, in an environment with the most advanced observational instruments and supercomputers, as researchers who work at forefront of world-class research; experts who carry out the development of advanced technology; and specialists who endeavor in education and public outreach activities equipped with advanced and specialized knowledge.

Numbers of students to be admitted:

Two (per year in five-year doctoral course)

Three (per year in three-year doctoral course)

Degree: Doctor of Philosophy

2. Admission Policy

The Department of Astronomical Sciences seeks students with a strong interest in astronomy and the Universe; a passion for unraveling scientific questions through theoretical, observational, and instrument development research; and students who have not only basic academic skills, but who also have the needed theoretical and creative aptitude for advanced research.

3. Department Details (Course Offerings)

• Optical and Near Infrared Astronomy

[Educational and Research Guidance Field] Ground-based astronomy / Optical and infrared telescope system / Planets / Sun, stars and interstellar matter / Galaxies and cosmology

• Radio Astronomy

[Educational and Research Guidance Field] Ground-based astronomy / Radio telescope system / Sun, stars and interstellar matter / Galaxies

• General Astronomy and Astrophysics

[Educational and Research Guidance Field] High-precision astronomical measurement / Astronomy from space / Data analysis and numerical simulation / Earth and planets / Sun, stars and interstellar matter / Galaxies and cosmology

4. Course-by-Course Education Program to Develop Student Research Capability and Aptitude

The School of Physical Sciences began its "Course-by-Course Education Program to Develop Student Research Capability and Aptitude" in FY 2009 as part of MEXT's Program for "Enhancing Systematic Education in Graduate Schools", offering four specific courses to the students: the Basic Course, the Advanced Research Course, the Project Research Course, and the Development Research Course. In FY 2012, the Department of Astronomical Science accepted four students in the Basic Course and three students in the Advanced Research Course. The Department also offered the e-learning class "Introduction to Observational Astronomy II" as a school-wide common basic subject, as well as the "Exercise in Scientific English" class, in order to provide a good foundation for students at the graduate school.

In order to better prepare students for the international stage, the Department hosted the Asia Winter School, as well as the 2012 Summer Student program at Mitaka, Mizusawa and Hawaii campuses to allow undergraduate students a chance to experience research at the Department of Astronomical Science. In addition to the existing Research Assistant system, the Department also provided Associate Researcher positions for the students of the Department of Astronomical Science.

(2) Staff and Students in the Department of Astronomical Science, School of Physical Sciences, the Graduate University for Advanced Studies

Number of Staff (2013/3/31)

Chair of the Department of Astronomical Science	1
Optical and Near Infrared Astronomy Course	
Professors	8
Associate Professors	12
Assistant Professors	10
Radio Astronomy Course	
Professors	7
Associate Professors	9
Assistant Professors	20
General Astronomy and Astrophysics Course	
Professors	9
Associate Professors	12
Assistant Professors	15
Total	103

Graduate Student List (29 students)

1st year (7 students)

Name	Principal Supervisor	Supervisor
Yang, Yi	Tamura, Motohide	Usuda, Tomonori
Ishikawa, Shogo	Kashikawa, Nobunari	Kodama, Tadayuki
Onishi, Kyoko	Iguchi, Satoru	Kuno, Nario
Onitsuka, Masahiro	Tamura, Motohide	Takato, Naruhisa
Sakurai, Junya	Miyazaki, Satoshi	Kobayashi, Yukiyasu
Shimakawa, Rizumu	Kodama, Tadayuki	Arimoto, Nobuo
Suzuki, Taiki	Oishi, Masatoshi	Tamura, Motohide

2nd year (5 students)

Name	Principal Supervisor	Supervisor
Aoki, Sumire	Arimoto, Nobuo	Kodama, Tadayuki
Saito, Yuriko	Hayashi, Saeko	Kashikawa, Nobunari
Hashizume, Katsuya	Tomisaka, Koji	Osuga, Ken
Matsuzawa, Ayumu	Iguchi, Satoru	Saito, Masao
Oh, DaeHyeon	Tamura, Motohide	Takami, Hideki

3rd year (4 students)

Name	Principal Supervisor	Supervisor
Kataoka, Akimasa	Tomisaka, Koji	Nakamura, Fumitaka
Shino, Nagisa	Honma, Mareki	Shibata, Katsunori
Min, Cheul Hong	Honma, Mareki	Shibata, Katsunori
Toshikawa, Jun	Kashikawa, Nobunari	Kodama, Tadayuki

4th year (8 students)

Name	Principal Supervisor	Supervisor
Ishizaki, Yoshifumi	Kashikawa, Nobunari	Iye, Masanori
Imase, Keisuke	Kodama, Tadayuki	Kashikawa, Nobunari
Suenaga, Takuya	Tamura, Motohide	Usuda, Tomonori
Sakai, Nobuyuki	Honma, Mareki	Shibata, Katsunori
Sako, Nobuharu	Watanabe, Tetsuya	Sekii, Takashi
Sukom, Amnart	Tamura, Motohide	Izumiura, Hideyuki
Kaithakkal, Anjali John	Suematsu, Yoshinori	Tsuneta, Saku
Pan, Hsi-An	Kuno, Nario	Iono, Daisuke

5th year (5 students)

Name	Principal Supervisor	Supervisor
Shibuya, Takatoshi	Iye, Masanori	Kashikawa, Nobunari
Kwon, JungMi	Tamura, Motohide	Hayashi, Saeko
Zhao, ZhengShi	Arimoto, Nobuo	Kodama, Tadayuki
Sato, Yaeko	Tamura, Motohide	Hayashi, Saeko
Horii, Shun	Watanabe, Junichi	Agata, Hidehiko

Research Student (1 student)

Name	Supervisor
Kawauchi, Kiyoe	Tamura, Motohide

(3) Education and Research Collaboration with The University of Tokyo

Number of Staff

Professors	9
Associate Professors	4
Total	13

Graduate Student List of The University of Tokyo (28 students)

Name	Supervisor
Aso, Yusuke	Ohashi, Nagayoshi
Iwaki, Daichi	Iye, Masanori
Ohashi, Satoshi	Mizuno, Norikazu
Saito, Toshiki	Kawabe, Ryohei
Shibagaki, Shota	Kajino, Toshitaka
Shibata, Takashi	Kokubo, Eiichiro
Sekiguchi, Sigeyuki	Sekimoto, Yutaro
Tagawa, Hiromichi	Gouda, Naoteru
Miyagawa, Kenta	Tsuneta, Saku
Aoki, Kunichika	Hara, Hirohisa
Izumida, Shian	Kajino, Toshitaka
Otomo, Yuzo	Kawabe, Ryohei
Koyamatsu, Shin	Ohashi, Nagayoshi
Sato, Senichi	Iye, Masanori

Name	Supervisor
Sekine, Masakazu	Sekimoto, Yutaro
Hara, Takuji	Gouda, Naoteru
Hara, chihomi	Kawabe, Ryohei
Fujii, Kosuke	Mizuno, Norikazu
Akiyama, Kazunori	Kobayashi, Hideyuki
Kiyokane, Kazuhiro	Mizuno, Norikazu
Fujii, Akihiko	Kokubo, Eiichiro
Ueda, Junko	Kawabe, Ryohei
Hayashi, Takayuki	Kobayashi, Hideyuki
Higuchi, Yuichi	Iye, Masanori
Rusu Cristian Eduard	Iye, Masanori
Koyama, Shoko	Kobayashi, Hideyuki
Tadaki, Kenichi	Iye, Masanori
Nakashima, Asami	Yamashita, Takuya

(4) Education and Research Collaboration with Other Graduate Schools

Name	Affiliated Institute	Supervisor
Watanabe, Dota	Toho University	Matsuo, Hiroshi

(5) Universities Collaborating with NAOJ

Kyoto University
 Kagoshima University
 Toho University
 Hiroshima University
 Tohoku University

(6) Graduate Course Education

Degrees Achieved with NAOJ Facilities

Name	Thesis
Zhao, Zheng-Shi (Doctor of Philosophy, SOKENDAI)	Origins of Blue Straggler Stars in Open Clusters, Globular Clusters and Dwarf Spheroidal Galaxies
Shibuya, Takatoshi (Doctor of Philosophy, SOKENDAI)	Cosmic Reionization Revealed by Distant Galaxies and Role of Extragalactic Outflow
Kwon, Jung Mi (Doctor of Philosophy, SOKENDAI)	Near-Infrared Linear and Circular Polarimetry in Star Forming Regions
Horii, Shun (Master of Science, SOKENDAI)	Possibility of meteor showers originated from various comets

8. Award Winners

Hayano, Yutaka	National Institutes of Natural Sciences Young Researcher Award, 2012	2012/6/10	Award Winning
Ohsuga, Ken	The 28th Kodansha Science Publication Award, 2012	2012/9/21	Award Winning
Solar Observatory, Long time scale persistent observation of the sun and making database team	NAOJ Director General Prize (Research)	2013/2/28	Award Winning
All staffs working at the restaurant in the Nobeyama Radio Observatory	Special Letter of Appreciation	2013/2/28	Presented
Ohsuga, Ken	The 17th PASJ Excellent Paper Award, 2012	2013/3/21	Award Winning

9. Overseas Travel / Important Dates / Public Access to Facilities

(1) Research and Academic Staff Overseas Travel

country / area \ category	Business Trip	Training	Total
Korea	45	0	45
China	40	0	40
Hong Kong	1	0	1
Taiwan	30	0	30
Malaysia	0	0	0
Singapore	4	0	4
Thailand	4	0	4
Philippines	0	0	0
Indonesia	0	0	0
Other areas in Asia	8	0	8
UK	18	0	18
Italy	4	0	4
Germany	15	0	15
France	15	0	15
Russia	6	0	6
Other areas in Europe	36	0	36
USA	68	0	68
Canada	3	0	3
Hawaii	57	0	57
Guam, Saipan	0	0	0
Australia	13	0	13
Other areas in Oceania	0	0	0
Mexico	0	0	0
Brazil	1	0	1
Other areas in South and Central America *	62	0	62
Middle East	0	0	0
Africa	1	0	1
others	0	0	0
Total	431	0	431

* Most travelers to South and Central America went to Chile.

(2) Important Dates (April 1, 2012 – March 31, 2013)

2012	
April 1:	Masahiko Hayashi appointed NAOJ Director General.
April 5:	17th Astronomy Lecture for Science Reporters held, with 52 participants from 33 organizations and 23 NAOJ members in attendance.
April 15:	Third Open Observatory event held at the Ibaraki University Center for Astronomy and the NAOJ Mizusawa VLBI Observatory Ibaraki Station, with nearly 1,000 visitors in attendance.
May 5:	Subaru Telescope, along with other Mauna Kea observatories, shared the excitement of astronomy by providing special exhibits and hands-on sessions at AstroDay held at a local shopping mall in Hilo.
May 26:	Spring 2012 Special Stargazing Party held at Okayama Astrophysical Observatory, with 101 visitors in attendance (out of 698 applicants).
May 29–31:	Subaru Spring School for undergraduate and graduate students held at Mitaka, with 14 participants selected from 26 applicants.
June 22:	Memorial ceremony held at Mitaka for the late Prof. Koh-ichiro Morita, who unexpectedly passed away on May 7, with nearly 110 NAOJ and non-NAOJ mourners in attendance. Following an address from NAOJ Director General Masahiko Hayashi, NAOJ Chile Observatory Director Tetsuo Hasegawa gave a retrospective on Prof. Morita's life and accomplishments, and NINS President Katsuhiko Sato and former NAOJ Director General Shoken Miyama offered their condolences. After the ceremony, mourners offered flowers in memory of the late Professor.
June 30 – July 1:	A pre-event preparatory workshop was held to impart a deeper understanding of the research to high school students scheduled to attend the sixth Z-star Research Team event using the radio telescope at the VERA Mizusawa station to search for water masers.
July 22:	Subaru Telescope staff had a stargazing program in Hawaii for intermediate school students from north-eastern Japan who had suffered losses in the 2011-tsunami.
July 26–27:	Summer Break Junior Astronomical Observation Sessions was held at Mitaka.
July 30 – August 3:	The workshop of Radio Astronomical Observation held for undergraduate students at the Nobeyama Radio Observatory, with 12 participants in attendance.
August 1 – September 30:	Third International Festival of Scientific Visualization — Connecting with Others Through Science — held, with 1,008,597 visitors attending over the course of the festival.
August 4:	Subaru Telescope staff gave a public lecture in English at Mauna Kea Visitor Information Station.
August 7–9:	Sixth Z-star Research Team event held for high school students from Iwate Prefecture. Invitations were sent again this year to high school students around the prefecture, including in tsunami-struck areas, with seven participants attending. One team succeeded in detecting water maser radiation.
August 11:	Iwate Galaxy Festival 2012, a special event for the Mizusawa region, held with nearly 2,200 visitors in attendance.
August 11:	Special open house of VERA Iriki Station held conjointly with the Yaeyama Kogen Star Festival 2012, with nearly 3,500 visitors in attendance.
August 15–17:	Chura-boshi Research Team workshop for high school students in Okinawa Prefecture held at VERA Ishigakijima Astronomical Observatory, with 21 participants in attendance. The Murikabushi telescope was used to search for water masers, and an image processing workshop was held.
August 18–26:	2012 South Island Star Festival held in conjunction with a special open house event at the VERA Ishigakijima Station and the Ishigakijima Astronomical Observatory. The event started with nearly 8,000 visitors to a dimmed-light stargazing event graced by a stunning night sky of unprecedented clarity; an astronomical observation party at the Ishigakijima Astronomical Observatory was also blessed with good weather and attended by 582 visitors; special open house at the VERA Station was attended by 563 visitors; for a total festival participation of nearly 9,760 visitors.
August 20 – September 4:	Subaru Telescope hosted an undergraduate student from a Japanese university in its summer student program.
August 25:	Special open house event held at NAOJ Nobeyama, with 3,308 visitors in attendance.
August 25:	Special open house event held at Okayama Astrophysical Observatory, with 607 visitors in attendance.
September 1:	Subaru Telescope staff hosted a seminar in Mitaka for undergraduate students of Japanese universities in preparation for an observation program using Subaru Telescope.
September 8 – October 8:	Fourth Tokyo International Science Festival held, with more than 30,000 visitors attending over the duration of the festival.
September 26:	30-Year Anniversary Ceremony, Commemorative Lecture, and Banquet for the Nobeyama Radio Observatory held in the city of Hokuto in Yamanashi Prefecture with about 160 attendants.

September 28:	Subaru Telescope staff gave a public lecture and special Moon Viewing event in English at ‘Imiloa Astronomy Center in Hilo.
October 5:	Commemorative ceremony held at Oshu City Cultural Hall (Z Hall) for the 10th anniversary since the VERA Project began observations in earnest, with nearly 200 visitors in attendance. After the ceremony, a “VERA Summit” for the heads of local municipalities hosting VERA observational stations and a celebratory banquet were held.
October 8:	A lecture meeting “The Extremely Large Telescope TMT: Redrawing Our Image of the Universe” was held, with about 250 visitors in attendance.
October 13:	Fall 2012 Special Stargazing Party held at Okayama Astrophysical Observatory, with 109 visitors in attendance (out of 331 applicants).
October 20:	Subaru Telescope staff gave a public lecture at ‘Imiloa Astronomy Center in Hilo.
October 26–27:	Mitaka Open House Day held, with 4,431 visitors in attendance.
October 30 – November 4:	Twelve students from Japanese universities visited Subaru Telescope to experience observations.
November 3–4:	A symposium held on the concept of the NAOJ Museum.
November 11:	“A New Vision of the Universe Explored by ALMA” public lecture held by NAOJ, with nearly 250 audience members in attendance.
November 21:	A ceremony for FY 2012 continuous service recognition held. Six NAOJ staff members were recognized: Nobuo Arimoto, Katsunori Shibata, Mika Yamauchi, Chieko Miyazawa, Kyoko Nakamura, and Takeo Fukuda.
December 2:	A lecture meeting “Investigating the Mysteries of the Dark Universe: the Origin of the Universe, the Formation of Planets, and the Birth of Life” held, with nearly 250 visitors in attendance.
December 3–8:	An international symposium “New Trends in Radio Astronomy in the ALMA Era: The 30th Anniversary of Nobeyama Radio Observatory” held at Hakone, with nearly 170 participants in attendance.
December 10:	Subaru Telescope Director Arimoto gave a public talk in English at Lyman Museum in Hilo.

2013

January 25:	Subaru Telescope staff participated in the Job/Career Expo in Hilo for high school students and give demonstrations in English.
January 26:	Subaru Telescope staff held a special exhibit and presentations in English for grades 4-12 during Onizuka Science Day at the University of Hawaii at Hilo.
February 11:	Star Island 2012 open house event held at VERA Ogasawara Station, with 244 visitors in attendance. Four dimensional digital movies using 4D2U technology were screened to massive acclaim. The astronomy lecture held the previous day also had a full audience.
February 23:	Astronomer from Subaru Telescope gave a public lecture in English at the University of Hawaii at Hilo.
March 8–15:	Subaru Telescope staff gave special lectures during the Journey through the Universe program in Hilo. They interacted with 1,222 students in 56 classrooms, in local elementary, intermediate, and high schools.
March 13:	ALMA inauguration ceremony held at the operations support facility, with more than 350 visitors in attendance, including Chilean President Sebastián Piñera. Nearly 70 invited guests from Japan attended, including Senior Vice Minister of Education, Culture, Sports, Science and Technology Teru Fukui. Representatives of Japanese newspapers and TV stations also conducted interviews.
March 29:	A ceremony for FY 2012 continuous service recognition for retiring staff members held. Five staff members were recognized: Tsuneaki Asada, Junji Inatani, Kiichi Okita, Akihiko Naito, and Takeshi Miyaji.

(3) Public Access to Facilities

1) Mitaka Campus

[Open year-round]

Dates: April to March, 10:00–17:00

Every day except for New Year season (December 28–January 4)

Visitors: 17,111

Open facilities: 65-cm Telescope Dome (Observatory History Museum), 20-cm Telescope Dome, Solar Tower Telescope, Exhibit Room, Housing of Repsold Transit Instrument (Transit Instrument Museum), Astronomical Instruments Museum, Gautier Meridian Circle, Old Library

[Regular Star Partys]

Dates: Friday before second Saturday; fourth Saturday

Visitors: 4,725 (23 events)

Open facility: 50-cm Public Telescope

[Special Open-House Event] Mitaka Open House Day

Dates: October 26 (Fri), 2012, 14:00–19:00

October 27 (Sat), 2012, 10:00–19:00

Topic: The Life of a Star: From Baby Star to Supernova

Visitors: 4,431

Co-hosted by NAOJ, the Institute of Astronomy at the University of Tokyo, and the Graduate University for Advanced Studies at the Department of Astronomical Science, the special two-day open-house event has been held annually since 2010. The always popular lecture event featured presentations related to this year's main theme given by representatives of the Institute of Astronomy at the University of Tokyo and NAOJ ("At the Ends of the Milky Way" by Naoto Kobayashi, associate professor, the University of Tokyo; "On the Front Lines of Star Formation Research: Stars Still Being Born" by Fumitaka Nakamura, associate professor, NAOJ, Graduate University for Advanced Studies; "Supernova Explosions: The Awe-Inspiring Deaths of Stars" by Masaomi Tanaka, assistant professor, NAOJ.)

The weather was favorable on both days, and for the first time in seven years the nighttime observation session was successfully held. All research projects participated with a full list of activities including public tours of normally restricted facilities, interactive exhibits, mini-lectures, popular games and paper crafts for children, and other attractions for visitors of all ages. Group tours, 4D2U theater screenings, and guided tours were also held. See the report for the Public Relations Center for more details.

2) Mizusawa Campus

[Open year-round]

Dates: April to March (except for New Year season), 9:00–17:00 daily

Visitors: 16,807

Open facilities: Kimura Hisashi Memorial Museum, VERA 20-m antenna, 10-m VLBI antenna

An open house event was held on campus with cooperation from the Oshu Space and Astronomy Museum (Yugakukan),

which opened in the city of Oshu in April 2008.

[Special Open House] Held as part of Iwate Galaxy Festival 2012 (hours: 10:00–21:00)

Date: August 11 (Sat), 2012, 10:00–16:00

Visitors: 2,200 (total for Galaxy Festival, out of which 650 participated in the open house)

Like last year, this event was co-hosted with the Ihatov Space Action Center and the city of Oshu. The event opened with a local elementary school marching band performance. It featured workshop corners run by local university and high school students and other forms of community interactions.

Attractions included discussions of the research results obtained from the VERA and RISE projects; a tour of the 20-m parabolic antenna; a commemorative photo booth; plastic bottle rockets; a quiz game; and guided tours of the Kimura Hisashi Memorial Museum.

Prof. Kouji Onishi of Nagano National College of Technology gave a lecture entitled "What Are Black Holes?" and Prof. Eiichiro Kokubo of NAOJ gave a lecture entitled "Exploring the Origins of the Earth and Moon Using Supercomputers." Both featured lively question and answer sessions at the end. At 650 visitors, attendance was unfortunately slightly less than in previous years due to the overlap with the Obon holidays. Iwate Galaxy Festival 2012 evening events (including a drum performance by local preschoolers, a miniature concert by a local brass band, and a stargazing session) brought the festival to a successful finish.

The NAOJ would like to thank all of the local town associations, astronomy clubs, tourist associations, and other parties who helped host the Galaxy Festival.

Iriki: VERA Iriki Station

[Open year-round]

Dates: April to March (except for New Year season)

Visitors: 5,219

[Special Open House]

Date: August 11 (Sat), 2012, 10:00–21:00

Visitors: 3,500

The special open house event was held again this year in conjunction with Yaeyama Kogen Star Festival 2012 hosted by an executive committee consisting primarily of members from Satsuma-Sendai city hall and Kagoshima University. Regular annual antenna tours, observational equipment demonstrations, mini-lectures, and observation sessions were held in the VERA 20-m radio telescope and 1-m optical/infrared telescope facilities. These events proved to be a hit with visitors all day long. Nearly 300 students experienced the joy of scientific experimentation through the popular physics experiments.

Ogasawara: VERA Ogasawara Station

[Open year-round]

Dates: April to March (except for New Year season)

Visitors: 4,511

[Special Open House]

Date: February 11 (Mon, a national holiday), 2013, 10:00–17:00

Visitors: 244

This year, our special open house event was held under the name “Star Island 2012.” In previous years, the event had been held in October or November so local residents could participate more easily. This year’s event was held in February, but even being held at a different time, the event proved popular with community members and attendance was comparable to previous years. Like last year, a free shuttle bus service was offered. Attractions included discussions of research results from the VERA and RISE projects, hands-on operating sessions at the 20-m radio telescope, mystery experiment corners, and quiz games. In addition, a four-dimensional digital planetarium show featuring 4D2U technology was a hit with audience members. On February 10, standing-room only crowds at the Ogasawara Visitor Center listened to the lecture “Surveying the Heavens and the Earth: Using Cosmic Radio Waves in Terrestrial Surveys” presented by Yoshihiro Fukuzaki of the Geographical Survey Institute and the lecture “Earth in the Universe” given by Prof. Eiichiro Kokubo of NAOJ. The NAOJ also cooperated in a stargazing session hosted by the local astronomy club on February 11 which was blessed with favorable weather and attended by nearly 40 visitors.

Ishigakijima: VERA Ishigakijima Station

[Open year-round]

Dates: Daily from April through March (except the New Year season); premises are open to the public 24 hours/day, and observation rooms are open during the hours of 10:00–16:30.

Visitors: 2,607

[Special Open House]

Dates: August 18 (Sat) to August 26 (Sun), 2012, 10:00–17:00

Visitors: 563

The Special Open House was held in conjunction with the 2012 South Island Star Festival.

As in previous years, attractions included antenna tours, photo booth stickers, merchandise, commemorative lectures, and exhibits.

Ishigakijima: Ishigakijima Astronomical Observatory

[Open year-round]

Dates: April to March

Open Hours: Wednesdays through Sundays (except for New Year season), 10:00–17:00

Stargazing sessions: Evenings on Saturdays, Sundays, Holidays, and Star Festival Week (19:00–22:00), three 30-minute sessions per evening (four in August)

Visitors: 8,527

Open facilities: Murikabushi 105-cm optical/infrared telescope, observations dome interior (including astronomical

image exhibits)

[2012 South Island Star Festival]

Dates: August 18 (Sat) to August 26 (Sun), 2012

Visitors: 9,762

This year’s event was co-hosted with NHK Okinawa as part of the festivities commemorating the 40th anniversary of the return of Okinawa and the 65th anniversary of Ishigaki City. Nearly 8,000 visitors attended a dimmed-light stargazing event graced by a stunning night sky of unprecedented clarity. Nearly 100 visitors attended the commemorative lecture on the final day of the festival. Nearly 700 people also visited the VERA Observational Station, including 370 visitors on the special open house day. More than 9,700 visitors attended the South Island Star Festival as a whole.

3) Nobeyama Campus

[Open year-round]

Dates: Daily, 8:30–17:00 (except for December 29 to January 3)

Visitors: 56,075

Open facilities: 45-m radio telescope, millimeter array, radioheliograph, etc. (exteriors only)

[Special Open House]

Date: August 25 (Sat), 2012, 9:30–16:00

Visitors: 3,308

The FY 2012 Nobeyama Special Open House event was graced with favorable weather and attended by 3,308 visitors, the greatest number in the past three years. As a special event, Prof. Ryohei Kawabe gave two invited lectures on the subject of “Exploring the Mysteries of Dark Space Using the Large Radio Telescope ALMA,” both to packed audiences. Mini-lectures were also held at the Solar Radio Observatory Corner and the ALMA/ASTE Corner. Other popular attractions returning from previous years included a stamp rally, a Q&A corner, an observation demonstration using the 45-m radio telescope, and a workshop on making your own solar radio signal detector. This year’s event also featured a panel exhibit of photographs and historical information from the time of construction to commemorate the 30th anniversary of the Nobeyama Radio Observatory and the 20th anniversary of the radioheliograph.

4) Okayama Astrophysical Observatory

[Open year-round]

Dates: 9:00–16:30 daily except during the mirror aluminization period in June

Visitors: 15,677

Open facilities: 188-cm reflecting telescope viewing window

[Special Open House]

Date: August 25 (Sat), 2012, 9:30–16:30

Visitors: 607

The special open house event for FY 2012 was co-hosted with the Okayama Astronomical Museum on August 25 (Sat).

Graduate school of Tokyo Institute of Technology associate

professor Bun'ei Sato's approximately 1 hour lecture on "Is There Another Earth? The Search for Exoplanets" in the dome of the 188-cm reflecting telescope was a huge success. Nearly 100 audience members attended. The Public Relations Center assisted in broadcasting lecture over the Internet. The always-popular tours of the main mirror of the 188-cm reflecting telescope conducted in the morning and afternoon filled to their maximum capacities of 120 participants. Two students from the Tokyo Institute of Technology assisted in the open house for the 50-cm reflecting telescope dome; two members of the Division of Optical and Infrared Astronomy helped with the Astronomy Q&A corner; and three members of the Mizusawa VLBI Observatory assisted with reception. Planetarium showings, solar observation using the 15-cm telescope, astronomy-related crafts, constellation/astronomy bingo, and an astronomy quiz game held at the Okayama Astronomical Museum provided fun for visitors of all ages.

The special open house event was co-hosted with the Asakuchi City Board of Education, with support from the Yakage Town Board of Education. In particular, the Observatory would like to thank the members of the Asakuchi City Board of Education for their considerable assistance in arranging the complimentary shuttle bus service between the Observatory and Kamogata Station on the JR San'yo Main Line.

[Special Stargazing Partys]

Date: May 26 (Sat), 2012, 18:30–22:45

Visitors: 101

224 applications representing 698 applicants were received.

Mars and Saturn were viewed.

Date: October 13 (Sat), 2012, 17:00–21:15

Visitors: 109

116 applications representing 331 applicants were received.

The first-magnitude star Vega in Lyra and the M15 globular cluster were viewed.

Two special Stargazing Parties were co-hosted with the Okayama Astronomical Museum in spring and fall. Maximum participation for each special session was 100. Because applications have exceeded capacity for both sessions in previous years, this year participants were selected by lottery, with 120 winners being selected to allow for cancellations.

Main events included tours of the Okayama Astronomical Museum, planetarium shows, astronomical observation using the 188-cm reflecting telescope, and descriptions of the night sky.

5) Subaru Telescope

[Summit Facility]

Dates open for public tour: 140 (these dates are listed in the public tour program page at Subaru Telescope's web site)

Public tour visitors: 1,134

Special tour visitors: 122 visits, 688 visitors

As some special tours were conducted during public tour programs, the total number of actual visitors was 1,638.

[Base Facility]

Special tour visitors: 38 visits, 542 visitors

10. Library, Publications

(1) Library

Number of books in each library (2013/3/31)

	Japanese Books	Foreign Books	Total
Mitaka	16,332	44,938	61,270
Okayama	217	3,272	3,489
Nobeyama	1,224	6,225	7,449
Mizusawa	4,942	18,067	23,009
Hawaii	1,456	3,941	5,397
Total	24,171	76,443	100,614

Number of journal titles in each library (2013/3/31)

	Japanese Journals	Foreign Journals	Total
Mitaka	584	756	1,340
Okayama	4	18	22
Nobeyama	16	82	98
Mizusawa	659	828	1,487
Hawaii	23	40	63
Total	1,286	1,724	3,010

(2) Publications

Here we list continuing publications produced by NAOJ in FY 2012.

The data is based on publications delivered to the libraries.

Mitaka

- 01) Report of the National Astronomical Observatory of Japan, Vol. 14 No. 3–4, 1 issue
- 02) Annual Report of the National Astronomical Observatory of Japan (in Japanese), No. 24, 2011, 1 issue
- 03) Annual Report of the National Astronomical Observatory of Japan (in English), Vol. 14, Fiscal Year 2011, 1 issue
- 04) National Astronomical Observatory Reprint, No. 2382–2463, 88 issues
- 05) Calendar and Ephemeris, 2013, 1 issue
- 06) NAOJ News, No. 225–236, 12 Issues
- 07) Guide to the National Astronomical Observatory of Japan (Japanese), 1 issue
- 08) Chronological Scientific Tables, 2013, 1 issue

Okayama

- 09) Okayama Users Meeting Fiscal Year 2012 (23rd Optical/Infrared Users Meeting), 1 issue